

Anti-Cleaved-PARP-Asp214 antibody (211-310 aa) [SRM5448] (STJ11107362)

GENERAL INFORMATION

Product Type	Primary antibodies
Applications	WB/ELISA
Host / Source	Rabbit
Reactivity	Mouse

PRODUCT PROPERTIES

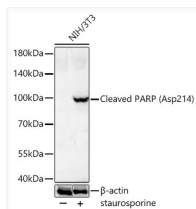
Clonality	Monoclonal
Concentration	Lot specific
Conjugation	Unconjugated
Purification	Affinity purification
Dilution Range	WB:1:1000-1:2000 ELISA:Recommended starting concentration is 1 Mu g/mL. Please optimize the concentration based on your specific assay requirements.
Formulation	PBS with 0.09% Sodium Azide, 0.05% BSA, 50% Glycerol, pH 7.3.
Isotype	IgG
Molecular Weight	Protein Mw: 113kDa Observed Mw: 89kDa
Storage Instruction	Store at-20°C for up to 1 year from the date of receipt, and avoid repeat freeze-thaw cycles.

TARGET INFORMATION

Immunogen Region	211-310 aa
Immunogen Sequence	DEV DGTDE VAKKSKK GKDK DSSKLEKALKAQNELIWN I K DELKKACSTNDLKELLIFNQ QQVPSGESAILDRVADGMAF GALLPCKECSGQLVFKSDAY
Specificity	A synthetic peptide corresponding to a sequence within amino acids 211-310 of Mouse Cleaved PARP (Asp214) (NP_031441.2).

ADDITIONAL INFORMATION

Note STRICTLY FOR FURTHER SCIENTIFIC RESEARCH USE ONLY (RUO). MUST NOT TO BE USED IN DIAGNOSTIC OR THERAPEUTIC APPLICATIONS.



Western blot analysis of lysates from NIH/3T3 cells using Cleaved PARP (Asp214) Rabbit mAb (STJ11107362) at 1:1000 dilution incubated overnight at 4C. NIH/3T3 cells were treated by staurosporine (1 Mu M) for 3 hour.
 Secondary antibody: HRP-conjugated Goat anti-Rabbit IgG (H+L) (STJS000856) at 1:10000 dilution.
 Lysates/proteins: 30 Mu g per lane.
 Blocking buffer: 3 % nonfat dry milk in TBST.
 Detection: ECL Basic Kit
 Exposure time: 90s.