

Anti-DCK antibody (1-260 aa) [SRM5446] (STJ11107359)

GENERAL INFORMATION

Product Type	Primary antibodies
Applications	WB/ELISA
Host / Source	Rabbit
Reactivity	Human/Rat

PRODUCT PROPERTIES

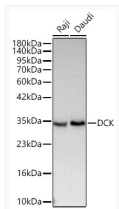
Clonality	Monoclonal
Concentration	Lot specific
Conjugation	Unconjugated
Purification	Affinity purification
Dilution Range	WB:1:2000-1:4000 ELISA:Recommended starting concentration is 1 Mu g/mL. Please optimize the concentration based on your specific assay requirements.
Formulation	PBS with 0.09% Sodium Azide, 0.05% BSA, 50% Glycerol, pH 7.3.
Isotype	IgG
Molecular Weight	Protein Mw: 31kDa Observed Mw: 31kDa
Storage Instruction	Store at-20°C for up to 1 year from the date of receipt, and avoid repeat freeze-thaw cycles.

TARGET INFORMATION

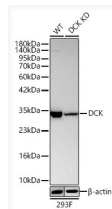
Gene ID	1633
Gene Symbol	DCK
UniProt ID	DCK_HUMAN
Immunogen Region	1-260 aa
Immunogen Sequence	MATPPKRSFPSFASSEGTR IKKISIEGNIAAGKSTFVNI LKQLCEDWEVPEPVARWCN VQSTQDEFEELTMSQKNGGN VLQMMYEKPERWSFTFQTYA CLSRIRAQLASLNGLKDAAE KPVLFERSVYSDRYIFASN LYESECNMNETWTIYQDWHD WMNMQFGQSLELDGIYLQA TPETCLHRIYLRGRNEEQGI PLEYLEKLHYKHESWLLHRT LKTNFDYLQEVPIITLDVN
Specificity	Recombinant fusion protein containing a sequence corresponding to amino acids 1-260 of human DCK (NP_000779.1).

ADDITIONAL INFORMATION

Note **STRICTLY FOR FURTHER SCIENTIFIC RESEARCH USE ONLY (RUO). MUST NOT TO BE USED IN DIAGNOSTIC OR THERAPEUTIC APPLICATIONS.**



Western blot analysis of various lysates using [KD Validated] DCK Rabbit mAb (STJ11107359) at 1:2000 dilution incubated overnight at 4C.
 Secondary antibody: HRP-conjugated Goat anti-Rabbit IgG (H+L) (STJS000856) at 1:10000 dilution.
 Lysates/proteins: 25 Mu g per lane.
 Blocking buffer: 3% nonfat dry milk in TBST.
 Detection: ECL Basic Kit
 Exposure time: 1s.



Western blot analysis of lysates from wild type (WT) and DCK knockdown (KD) 293F cells using [KD Validated] DCK Rabbit mAb (STJ11107359) at 1:2000 dilution incubated overnight at 4C.
 Secondary antibody: HRP-conjugated Goat anti-Rabbit IgG (H+L) (STJS000856) at 1:10000 dilution.
 Lysates/proteins: 25 Mu g per lane.
 Blocking buffer: 3% nonfat dry milk in TBST.
 Detection: ECL Basic Kit
 Exposure time: 60s.