

## Anti-IL-1 alpha antibody (113-271 aa) [SRM5445] (STJ11107358)

### GENERAL INFORMATION

Product Type	Primary antibodies
Applications	WB/ELISA
Host / Source	Rabbit
Reactivity	Human

### PRODUCT PROPERTIES

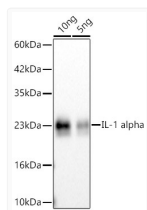
Clonality	Monoclonal
Concentration	Lot specific
Conjugation	Unconjugated
Purification	Affinity purification
Dilution Range	WB:1:1000-1:2000 ELISA:Recommended starting concentration is 1 Mu g/mL. Please optimize the concentration based on your specific assay requirements.
Formulation	PBS with 0.09% Sodium Azide, 0.05% BSA, 50% Glycerol, pH 7.3.
Isotype	IgG
Molecular Weight	Protein Mw: 31kDa Observed Mw: 21kDa
Storage Instruction	Store at -20°C for up to 1 year from the date of receipt, and avoid repeat freeze-thaw cycles.

### TARGET INFORMATION

Gene ID	<a href="#">3552</a>
Gene Symbol	<a href="#">IL1A</a>
UniProt ID	<a href="#">IL1A_HUMAN</a>
Immunogen Region	113-271 aa
Immunogen Sequence	SAPFSLSNVKYNFMRIIKY EFILNDALNQSIIRANDQYL TAAALHNLDEAVKFDMGAYK SSKDDAKITVILRISKTKLY VTAQDEDQPVLLKEMPEIPK TITGSETNLLFFWETHGTKN YFTSVAHPNLFIA TKQDYVW CLAGGPPSITDFQILENQA
Specificity	Recombinant fusion protein containing a sequence corresponding to amino acids 113-271 of human IL-1 alpha (NP_000566.3).

### ADDITIONAL INFORMATION

Note STRICTLY FOR FURTHER SCIENTIFIC RESEARCH USE ONLY (RUO). MUST NOT TO BE USED IN DIAGNOSTIC OR THERAPEUTIC APPLICATIONS.



Western blot analysis of lysates from Recombinant Human IL-1 alpha Protein (STJP000874) using IL-1 alpha Rabbit mAb (STJ11107358) at 1:2000 dilution incubated overnight at 4C.

Secondary antibody: HRP-conjugated Goat anti-Rabbit IgG (H+L) (STJS000856) at 1:10000 dilution.

Lysates/proteins: 10ng, 5ng Mu g per lane.  
Blocking buffer: 3% nonfat dry milk in TBST.  
Detection: ECL Basic Kit  
Exposure time: 90s.