

## Anti-PPBP antibody (59-128 aa) [SRM5441] (STJ11107354)

### GENERAL INFORMATION

|               |                    |
|---------------|--------------------|
| Product Type  | Primary antibodies |
| Applications  | IF/ICC/ELISA       |
| Host / Source | Rabbit             |
| Reactivity    | Human              |

### PRODUCT PROPERTIES

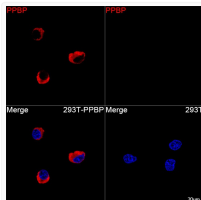
|                     |  |
|---------------------|--|
| Clonality           | Monoclonal   |
| Concentration       | Lot specific   |
| Conjugation         | Unconjugated   |
| Purification        | Affinity purification  |
| Dilution Range      | IF/ICC:1:200-1:800<br>ELISA: Recommended starting concentration is 1 µg/mL. Please optimize the concentration based on your specific assay requirements. |
| Formulation         | PBS with 0.09% Sodium Azide, 0.05% BSA, 50% Glycerol, pH 7.3.  |
| Isotype             | IgG  |
| Molecular Weight    | Protein Mw: 14kDa<br>Observed Mw: Refer to figures   |
| Storage Instruction | Store at -20°C for up to 1 year from the date of receipt, and avoid repeat freeze-thaw cycles.   |

### TARGET INFORMATION

|                    |   |
|--------------------|---|
| Gene ID            | <a href="#">5473</a>  |
| Gene Symbol        | <a href="#">PPBP</a>  |
| UniProt ID         | <a href="#">CXCL7_HUMAN</a>   |
| Immunogen Region   | 59-128 aa   |
| Immunogen Sequence | AELRCMCIKTTSGIHPKNIQ SLEVIGKGTHCNQVEVIATL KDGRKICLDPDAPRIKKIVQ KKLAGEDESAD  |
| Specificity        | Recombinant fusion protein containing a sequence corresponding to amino acids 59-128 of human PPBP (NP_002695.1). |

### ADDITIONAL INFORMATION

Note STRICTLY FOR FURTHER SCIENTIFIC RESEARCH USE ONLY (RUO). MUST NOT TO BE USED IN DIAGNOSTIC OR THERAPEUTIC APPLICATIONS.



Confocal imaging of 293T cells transfected with PPBP using PPBP Rabbit mAb (STJ11107354, dilution 1:200) followed by a further incubation with Cy3 Goat Anti-Rabbit IgG (H+L) (STJS001166, dilution 1:500) (Red). DAPI was used for nuclear staining (Blue). Objective: 100x.