

Anti-GCSH antibody (49-173 aa) [SRM5429] (STJ11107342)

GENERAL INFORMATION

Product Type	Primary antibodies
Applications	IF/ICC/ELISA
Host / Source	Rabbit
Reactivity	Human

PRODUCT PROPERTIES

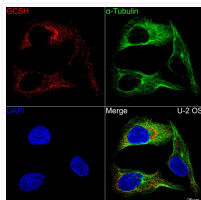
Clonality	Monoclonal
Concentration	Lot specific
Conjugation	Unconjugated
Purification	Affinity purification
Dilution Range	IF/ICC:1:100-1:400 ELISA:Recommended starting concentration is 1 µg/mL. Please optimize the concentration based on your specific assay requirements.
Formulation	PBS with 0.09% Sodium Azide, 0.05% BSA, 50% Glycerol, pH 7.3.
Isotype	IgG
Molecular Weight	Protein Mw: 19kDa Observed Mw: Refer to figures
Storage Instruction	Store at -20°C for up to 1 year from the date of receipt, and avoid repeat freeze-thaw cycles.

TARGET INFORMATION

Gene ID	2653
Gene Symbol	GCSH
UniProt ID	GCSH_HUMAN
Immunogen Region	49-173 aa
Immunogen Sequence	SVRKFTEKHEWVTTENGIGT VGISNFAQEALGDVVYCSLP EVGTKLNKQDEFGALESVKA ASELYSPLSGEVTEINEALA ENPGLVnkSCYEDGWLIKMT LSNPSELDELMSEEAYEKYI KSIEE
Specificity	Recombinant fusion protein containing a sequence corresponding to amino acids 49-173 of human GCSH (NP_004474.2).

ADDITIONAL INFORMATION

Note STRICTLY FOR FURTHER SCIENTIFIC RESEARCH USE ONLY (RUO). MUST NOT TO BE USED IN DIAGNOSTIC OR THERAPEUTIC APPLICATIONS.



Confocal imaging of U-2 OS cells using GCSH Rabbit mAb (STJ11107342, dilution 1:200) followed by a further incubation with Cy3 Goat Anti-Rabbit IgG (H+L) (STJS001166, dilution 1:500) (Red). The cells were counterstained with β -Tubulin Mouse mAb (STJ11107556, dilution 1:400) followed by incubation with ABflo® 488-conjugated Goat Anti-Mouse IgG (H+L) antibody (STJS001209, dilution 1:500) (Green). DAPI was used for nuclear staining (Blue). Objective: 100x.