

Anti-I Kappa B Alpha antibody (1-314 aa) [SRM5422] (STJ11107334)

GENERAL INFORMATION

Product Type	Primary antibodies
Applications	WB/ELISA
Host / Source	Rabbit
Reactivity	Human/Mouse/Rat

PRODUCT PROPERTIES

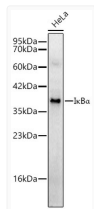
Clonality	Monoclonal
Concentration	Lot specific
Conjugation	Unconjugated
Purification	Affinity purification
Dilution Range	WB:1:1000-1:2000 ELISA:Recommended starting concentration is 1 Mu g/mL. Please optimize the concentration based on your specific assay requirements.
Formulation	PBS with 0.09% Sodium Azide, 0.05% BSA, 50% Glycerol, pH 7.3.
Isotype	IgG
Molecular Weight	Protein Mw: 35kDa Observed Mw: 40kDa
Storage Instruction	Store at -20°C for up to 1 year from the date of receipt, and avoid repeat freeze-thaw cycles.

TARGET INFORMATION

Gene ID	25493
Gene Symbol	Nfkbia
UniProt ID	IKBA_RAT
Immunogen Region	1-314 aa
Immunogen Sequence	MFQPAGHGQDWAMEGPRDGL KKERLVDDRHDGSLDSMKDE DYEQMVKELREIRLQPQEAP LAAEPWKQQLTEDGDSFLHL AIIHEEKTLMVEIGQVKGD LAFLNFGNNLQQTPLHLAVI TNQPGIAEALLKAGCDPELR DFRGNTPLHLACEQGCLASV AVLTQTCTPQHLHSVLQATN YNGHTCLHLASIHGYLGIVE HLVTLGADVNAQEPENGRTA LHLAVDLQNPDLVSLLLKC
Specificity	Recombinant fusion protein containing a sequence corresponding to amino acids 1-314 of rat I Kappa B Alpha (NP_001099190.2).

ADDITIONAL INFORMATION

Note STRICTLY FOR FURTHER SCIENTIFIC RESEARCH USE ONLY (RUO). MUST NOT TO BE USED IN DIAGNOSTIC OR THERAPEUTIC APPLICATIONS.



Western blot analysis of lysates from HeLa cells using I^κB α Rabbit mAb (STJ11107334) at 1:1000 dilution incubated overnight at 4C.
Secondary antibody: HRP-conjugated Goat anti-Rabbit IgG (H+L) (STJS000856) at 1:10000 dilution.
Lysates/proteins: 25 Mu g per lane.
Blocking buffer: 3% nonfat dry milk in TBST.
Detection: ECL Basic Kit
Exposure time: 45s.