

## Anti-ICOS/CD278 antibody (21-142 aa) [SRM5417] (STJ11107328)

### GENERAL INFORMATION

Product Type	Primary antibodies
Applications	WB/ELISA
Host / Source	Rabbit
Reactivity	Mouse/Rat

### PRODUCT PROPERTIES

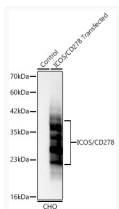
Clonality	Monoclonal
Concentration	Lot specific
Conjugation	Unconjugated
Purification	Affinity purification
Dilution Range	WB:1:1000-1:6000 ELISA:Recommended starting concentration is 1 Mu g/mL. Please optimize the concentration based on your specific assay requirements.
Formulation	PBS with 0.09% Sodium Azide, 0.05% BSA, 50% Glycerol, pH 7.3.
Isotype	IgG
Molecular Weight	Protein Mw: 22KDa Observed Mw: 20-40kDa
Storage Instruction	Store at -20°C for up to 1 year from the date of receipt, and avoid repeat freeze-thaw cycles.

### TARGET INFORMATION

Gene ID	<a href="#">54167</a>
Gene Symbol	<a href="#">Icos</a>
UniProt ID	<a href="#">ICOS_MOUSE</a>
Immunogen Region	21-142 aa
Immunogen Sequence	EINGSADHRMFSFHNGGVQI SCKYPETVQQLKMRLFRERE VLCELTKTGSGNAVSIKNP MLCLYHLSNNSVSFFLNPNPD SSQGSYYFCSLSIFDPPPFQ ERNLSGGYLHIYESQLCCQL KL
Specificity	Recombinant fusion protein containing a sequence corresponding to amino acids 21-142 of mouse ICOS/CD278 (NP_059508.2).

### ADDITIONAL INFORMATION

Note STRICTLY FOR FURTHER SCIENTIFIC RESEARCH USE ONLY (RUO). MUST NOT TO BE USED IN DIAGNOSTIC OR THERAPEUTIC APPLICATIONS.



Western blot analysis of lysates from CHO cells using ICOS/CD278 Rabbit mAb (STJ11107328) at 1:1000 dilution incubated overnight at 4C.

Secondary antibody: HRP-conjugated Goat anti-Rabbit IgG (H+L) (STJS000856) at 1:10000 dilution.

Lysates/proteins: 20 Mu g per lane.

Blocking buffer: 3% nonfat dry milk in TBST.

Detection: ECL Basic Kit

Exposure time: 3s.