

## Anti-FXR/NR1H4 antibody (1-230 aa) [SRM5416] (STJ11107327)

### GENERAL INFORMATION

Product Type	Primary antibodies
Applications	WB/ELISA
Host / Source	Rabbit
Reactivity	Human/Mouse/Rat

### PRODUCT PROPERTIES

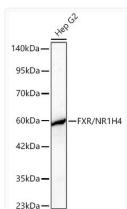
Clonality	Monoclonal
Concentration	Lot specific
Conjugation	Unconjugated
Purification	Affinity purification
Dilution Range	WB:1:1000-1:2000 ELISA:Recommended starting concentration is 1 Mu g/mL. Please optimize the concentration based on your specific assay requirements.
Formulation	PBS with 0.09% Sodium Azide, 0.05% BSA, 50% Glycerol, pH 7.3.
Isotype	IgG
Molecular Weight	Protein Mw: 56kDa Observed Mw: 56kDa

### TARGET INFORMATION

Gene ID	<a href="#">9971</a>
Gene Symbol	<a href="#">NR1H4</a>
UniProt ID	<a href="#">NR1H4_HUMAN</a>
Immunogen Region	1-230 aa
Immunogen Sequence	MVMQFQGLNPIQISPHCSC TPSGFFMEMMSMKPAKGVLT EQVAGPLGQNLEVEPYSQYS NVQFPQVQPQISSSSYYSNL GFYPQQPEEWYSPGIYELRR MPAETLYQGETEVAEMPVTK KPRMGASAGRIKGDDELVCVVC GDRASGYHYNALTCGCKGF FRRSITKNNAVYKCKNGGNCV MDMYMRKCKQECRLRKCKEM GMLAECMYTGLLTEIQCKSK RLRKNVKQHA
Specificity	Recombinant fusion protein containing a sequence corresponding to amino acids 1-230 of human FXR/NR1H4 (NP_001193922.1).

### ADDITIONAL INFORMATION

Note STRICTLY FOR FURTHER SCIENTIFIC RESEARCH USE ONLY (RUO). MUST NOT TO BE USED IN DIAGNOSTIC OR THERAPEUTIC APPLICATIONS.



Western blot analysis of lysates from Hep G2 cells using FXR/NR1H4 Rabbit mAb (STJ11107327) at 1:1000 dilution incubated overnight at 4C. Secondary antibody: HRP-conjugated Goat anti-Rabbit IgG (H+L) (STJS000856) at 1:10000 dilution.  
Lysates/proteins: 25 Mu g per lane.  
Blocking buffer: 3% nonfat dry milk in TBST.  
Detection: ECL Basic Kit  
Exposure time: 90s.