

## Anti-MTHFR antibody (363-656 aa) [SRM5415] (STJ11107326)

### GENERAL INFORMATION

Product Type	Primary antibodies
Applications	WB/ELISA
Host / Source	Rabbit
Reactivity	Human/Mouse/Rat

### PRODUCT PROPERTIES

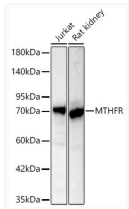
Clonality	Monoclonal
Concentration	Lot specific
Conjugation	Unconjugated
Purification	Affinity purification
Dilution Range	WB:1:1000-1:4000 ELISA:Recommended starting concentration is 1 µg/mL. Please optimize the concentration based on your specific assay requirements.
Formulation	PBS with 0.09% Sodium Azide, 0.05% BSA, 50% Glycerol, pH 7.3.
Isotype	IgG
Molecular Weight	Protein Mw: 75kDa Observed Mw: 70kDa
Storage Instruction	Store at -20°C for up to 1 year from the date of receipt, and avoid repeat freeze-thaw cycles.

### TARGET INFORMATION

Gene ID	<a href="#">4524</a>
Gene Symbol	<a href="#">MTHFR</a>
UniProt ID	<a href="#">MTHR_HUMAN</a>
Immunogen Region	363-656 aa
Immunogen Sequence	RPIFWASRPKSYIYRTQEWD EFPNGRWGNSSSPAFGELKD YYLFYLKSKSPKEELLKMWG EELTSEESVFEVFLVLSGE PNRNGHKVTCLPWNDEPLAA ETSLLKELLRVNRQGILT NSQPNINGKPSDDPIVWGP SGGYVFQKAYLEFFTSRETA EALLQVLKKEYELRVNYHLVN VKGENITNAPELQPNVAVTWG IFPGREIIQPTVVDVPSFMF WKDEAFALWIERWVKLYEE
Specificity	Recombinant fusion protein containing a sequence corresponding to amino acids 363-656 of human MTHFR (NP_005948.3).

### ADDITIONAL INFORMATION

Note STRICTLY FOR FURTHER SCIENTIFIC RESEARCH USE ONLY (RUO). MUST NOT TO BE USED IN DIAGNOSTIC OR THERAPEUTIC APPLICATIONS.



Western blot analysis of various lysates using MTHFR Rabbit mAb (STJ11107326) at 1:1000 dilution incubated overnight at 4C.  
Secondary antibody: HRP-conjugated Goat anti-Rabbit IgG (H+L) (STJS000856) at 1:10000 dilution.  
Lysates/proteins: 25 µg per lane.  
Blocking buffer: 3% nonfat dry milk in TBST.  
Detection: ECL Basic Kit  
Exposure time: 20s.