

Anti-Fos B antibody (1-100 aa) [SRM5401] (STJ11107312)

GENERAL INFORMATION

Product Type	Primary antibodies
Applications	WB/ELISA
Host / Source	Rabbit
Reactivity	Human/Rat

PRODUCT PROPERTIES

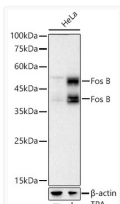
Clonality	Monoclonal
Concentration	Lot specific
Conjugation	Unconjugated
Purification	Affinity purification
Dilution Range	WB:1:1000-1:4000 ELISA:Recommended starting concentration is 1 Mu g/mL. Please optimize the concentration based on your specific assay requirements.
Formulation	PBS with 0.09% Sodium Azide, 0.05% BSA, 50% Glycerol, pH 7.3.
Isotype	IgG
Molecular Weight	Protein Mw: 36kDa Observed Mw: 38kDa/48kDa
Storage Instruction	Store at -20°C for up to 1 year from the date of receipt, and avoid repeat freeze-thaw cycles.

TARGET INFORMATION

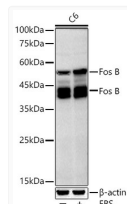
Gene ID	2354
Gene Symbol	FOSB
UniProt ID	FOSB_HUMAN
Immunogen Region	1-100 aa
Immunogen Sequence	MFQAFPGDYDSGSRCS SSPS AESQYLSSVDSFGSPPTAAA SQECAGLGEMPGSFVPTVTA ITTSQDLQWLQPTLISSMA QSQQPLASQPPVVDPYDMP
Specificity	A synthetic peptide corresponding to a sequence within amino acids 1-100 of human Fos B (NP_006723.2).

ADDITIONAL INFORMATION

Note STRICTLY FOR FURTHER SCIENTIFIC RESEARCH USE ONLY (RUO). MUST NOT TO BE USED IN DIAGNOSTIC OR THERAPEUTIC APPLICATIONS.



Western blot analysis of lysates from HeLa cells using Fos B Rabbit mAb (STJ11107312) at 1:1000 dilution incubated overnight at 4°C. HeLa cells were treated by PMA/TPA (200 nM) at 37°C for 15 minutes after serum-starvation overnight. Secondary antibody: HRP-conjugated Goat anti-Rabbit IgG (H+L) (STJS000856) at 1:10000 dilution. Lysates/proteins: 30 Mu g per lane. Blocking buffer: 3 % nonfat dry milk in TBST. Detection: ECL Basic Kit. Exposure time: 20s.



Western blot analysis of lysates from C6 cells using Fos B Rabbit mAb (STJ11107312) at 1:1000 dilution incubated overnight at 4°C. C6 cells were treated by 10% FBS at 37°C for 8 hours after serum-starvation overnight. Secondary antibody: () at 1:10000 dilution. Lysates/proteins: 30 Mu g per lane. Blocking buffer: 3 % nonfat dry milk in TBST. Detection: (). Exposure time: 60s.