

## Anti-ADRP/Perilipin 2 antibody (331-430 aa) [SRM5398] (STJ11107308)

### GENERAL INFORMATION

Product Type	Primary antibodies
Applications	IF/ICC/ELISA
Host / Source	Rabbit
Reactivity	Human

### PRODUCT PROPERTIES

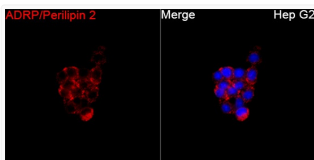
Clonality	Monoclonal
Concentration	Lot specific
Conjugation	Unconjugated
Purification	Affinity purification
Dilution Range	IF/ICC:1:100-1:400 ELISA:Recommended starting concentration is 1 µg/mL. Please optimize the concentration based on your specific assay requirements.
Formulation	PBS with 0.09% Sodium Azide, 0.05% BSA, 50% Glycerol, pH 7.3.
Isotype	IgG
Molecular Weight	Protein Mw: 48kDa Observed Mw: Refer to figures
Storage Instruction	Store at -20°C for up to 1 year from the date of receipt, and avoid repeat freeze-thaw cycles.

### TARGET INFORMATION

Gene ID	<a href="#">123</a>
Gene Symbol	<a href="#">PLIN2</a>
UniProt ID	<a href="#">PLIN2_HUMAN</a>
Immunogen Region	331-430 aa
Immunogen Sequence	NIQGVPQNIQDQAKHMGVMA GDIYSVFRNAASFKEVSDSL LTSSKGQLQKMKESLDDVMD YLVNNTPLNWLVGPFYPQLT ESQNAQDQGAEMDKSSQETQ
Specificity	A synthetic peptide corresponding to a sequence within amino acids 331-430 of human ADRP/Perilipin 2 (NP_001113.2).

### ADDITIONAL INFORMATION

Note STRICTLY FOR FURTHER SCIENTIFIC RESEARCH USE ONLY (RUO). MUST NOT TO BE USED IN DIAGNOSTIC OR THERAPEUTIC APPLICATIONS.



Immunofluorescence analysis of Hep G2 cells using ADRP/Perilipin 2 Rabbit mAb (STJ11107308) at a dilution of 1:100 (40x lens). Secondary antibody: Cy3-conjugated Goat anti-Rabbit IgG (H+L) (STJS001166) at 1:500 dilution. Blue: DAPI for nuclear staining.