

Anti-IL12B antibody (23-335 aa) [SRM5387] (STJ11107298)

GENERAL INFORMATION

Product Type	Primary antibodies
Applications	WB/ELISA
Host / Source	Rabbit
Reactivity	Human

PRODUCT PROPERTIES

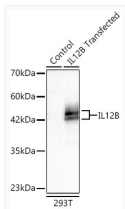
Clonality	Monoclonal
Concentration	Lot specific
Conjugation	Unconjugated
Purification	Affinity purification
Dilution Range	WB:1:1000-1:6000 ELISA:Recommended starting concentration is 1 µg/mL. Please optimize the concentration based on your specific assay requirements.
Formulation	PBS with 0.09% Sodium Azide, 0.05% BSA, 50% Glycerol, pH 7.3.
Isotype	IgG
Molecular Weight	Protein Mw: 38kDa Observed Mw: 45-50kDa
Storage Instruction	Store at -20°C for up to 1 year from the date of receipt, and avoid repeat freeze-thaw cycles.

TARGET INFORMATION

Gene ID	16160
Gene Symbol	Il12b
UniProt ID	IL12B_MOUSE
Immunogen Region	23-335 aa
Immunogen Sequence	MWELEKDVYVVEVDWTPDAP GETVNLTCDTPEEDDITWTS DQRHGVIGSGKTLTITVKEF LDAGQYTCHKGGETLSHSHL LLHKKENGWSTEILKNFKN KTFKCEAPNYSGRFTCSWL VQRNMDLKFNIKSSSSPDS RAVTCGMAISLAEKVTLQDR DYEKYSVSCQEDVTCPTAEE TLPIELALEARQQNKYENYS TSFFIRDIKPDPPKNLQMK PLKNSQVEVSWEYPDSWST
Specificity	Recombinant fusion protein containing a sequence corresponding to amino acids 23-335 of mouse IL12B (NP_001290173.1).

ADDITIONAL INFORMATION

Note STRICTLY FOR FURTHER SCIENTIFIC RESEARCH USE ONLY (RUO). MUST NOT TO BE USED IN DIAGNOSTIC OR THERAPEUTIC APPLICATIONS.



Western blot analysis of lysates from wild type (WT) and 293T cells transfected with IL12B using IL12B Rabbit mAb (STJ11107298) at 1:1000 dilution incubated overnight at 4°C.

Secondary antibody: HRP-conjugated Goat anti-Rabbit IgG (H+L) (STJS000856) at 1:10000 dilution.

Lysates/proteins: 25 µg per lane.

Blocking buffer: 3% nonfat dry milk in TBST.

Detection: ECL Basic Kit (Exposure time: 10s.