

## Anti-PSAP antibody (275-524 aa) [SRM5379] (STJ11107290)

### GENERAL INFORMATION

Product Type	Primary antibodies
Applications	WB/ELISA
Host / Source	Rabbit
Reactivity	Human

### PRODUCT PROPERTIES

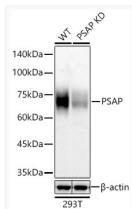
Clonality	Monoclonal
Concentration	Lot specific
Conjugation	Unconjugated
Purification	Affinity purification
Dilution Range	WB:1:1000-1:2000 ELISA:Recommended starting concentration is 1 Mu g/mL. Please optimize the concentration based on your specific assay requirements.
Formulation	PBS with 0.09% Sodium Azide, 0.05% BSA, 50% Glycerol, pH 7.3.
Isotype	IgG
Molecular Weight	Protein Mw: 58kDa Observed Mw: 70kDa
Storage Instruction	Store at -20°C for up to 1 year from the date of receipt, and avoid repeat freeze-thaw cycles.

### TARGET INFORMATION

Gene ID	<a href="#">5660</a>
Gene Symbol	<a href="#">PSAP</a>
UniProt ID	<a href="#">SAP_HUMAN</a>
Immunogen Region	275-524 aa
Immunogen Sequence	KEMPMQTLVPAKVASKNVIP ALELVEPIKKHEVPAKSDVY CEVCEFLVKEVTKLIDNNKT EKEILDAFDKMC SKLPKSLSEECQEVVDYTGSSILSILLE EVSPELVCSMLHLCSGTRLP ALTVHVTQPKDGGFCEVCKK LVGYLDRNLEKNSTKQEILA ALEKGC SFLPDPYKQCDQF VAEYEPVLIEILVEVMDPSF VCLKIGACPSAHKPLLGTGTEK CIWGPSYWCQNTETAAQCN
Specificity	Recombinant fusion protein containing a sequence corresponding to amino acids 275-524 of human PSAP (NP_002769.1).

### ADDITIONAL INFORMATION

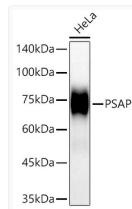
Note **STRICTLY FOR FURTHER SCIENTIFIC RESEARCH USE ONLY (RUO). MUST NOT TO BE USED IN DIAGNOSTIC OR THERAPEUTIC APPLICATIONS.**



Western blot analysis of lysates from wild type (WT) and PSAP knockdown (KD) 293T cells using [KD Validated] PSAP Rabbit mAb (STJ11107290) at 1:1000 dilution incubated overnight at 4°C.

Secondary antibody: HRP-conjugated Goat anti-Rabbit IgG (H+L) (STJS000856) at 1:10000 dilution.

Lysates/proteins: 25 Mu g per lane.  
Blocking buffer: 3% nonfat dry milk in TBST.  
Detection: ECL Basic Kit  
Exposure time: 90s.



Western blot analysis of lysates from HeLa cells using [KD Validated] PSAP Rabbit mAb (STJ11107290) at 1:1000 dilution incubated overnight at 4°C.

Secondary antibody: HRP-conjugated Goat anti-Rabbit IgG (H+L) (STJS000856) at 1:10000 dilution.

Lysates/proteins: 25 Mu g per lane.  
Blocking buffer: 3% nonfat dry milk in TBST.  
Detection: ECL Basic Kit  
Exposure time: 90s.