

Anti-TCPTP/PTPN2 antibody (1-353 aa) [SRM5377] (STJ11107288)

GENERAL INFORMATION

Product Type	Primary antibodies
Applications	WB/ELISA
Host / Source	Rabbit
Reactivity	Human/Mouse/Rat

PRODUCT PROPERTIES

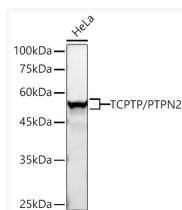
Clonality	Monoclonal
Concentration	Lot specific
Conjugation	Unconjugated
Purification	Affinity purification
Dilution Range	WB:1:1000-1:6000 ELISA:Recommended starting concentration is 1 µg/mL. Please optimize the concentration based on your specific assay requirements.
Formulation	PBS with 0.09% Sodium Azide, 0.05% BSA, 50% Glycerol, pH 7.3.
Isotype	IgG
Molecular Weight	Protein Mw: 48kDa Observed Mw: 45-50kDa
Storage Instruction	Store at -20°C for up to 1 year from the date of receipt, and avoid repeat freeze-thaw cycles.

TARGET INFORMATION

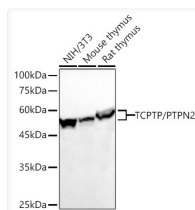
Gene ID	5771
Gene Symbol	PTPN2
UniProt ID	PTN2_HUMAN
Immunogen Region	1-353 aa
Immunogen Sequence	MPTTIEREFEELDTQRRWQP LYLEIRNESHDPHRYVAKFP ENRRNRNRYRDVSPYDHSRVK LQNAENDYINASLVDIEEAQ RSYILTQGPLPNTCCHFVLM VWQQTKAVVMLNRIVEKES VKCAQYWPTDDQEMLFKETG FSVKLLSEDKSYTYVHLLQ LENINSGETRTISHFYTTW PDFGVPEPASPFLNFLFKVR ESGSLNPDHGPAVHCASAGI GRSGETFSLVDTCLVLMKEG
Specificity	Recombinant fusion protein containing a sequence corresponding to amino acids 1-353 of human TCPTP/PTPN2 (NP_536348.1).

ADDITIONAL INFORMATION

Note **STRICTLY FOR FURTHER SCIENTIFIC RESEARCH USE ONLY (RUO). MUST NOT TO BE USED IN DIAGNOSTIC OR THERAPEUTIC APPLICATIONS.**



Western blot analysis of lysates from HeLa cells using TCPTP/PTPN2 Rabbit mAb (STJ11107288) at 1:1000 dilution incubated overnight at 4°C. Secondary antibody: HRP-conjugated Goat anti-Rabbit IgG (H+L) (STJS000856) at 1:10000 dilution.
Lysates/proteins: 25 µg per lane.
Blocking buffer: 3% nonfat dry milk in TBST.
Detection: ECL Basic Kit
Exposure time: 10s.



Western blot analysis of various lysates using TCPTP/PTPN2 Rabbit mAb (STJ11107288) at 1:1000 dilution incubated overnight at 4°C. Secondary antibody: HRP-conjugated Goat anti-Rabbit IgG (H+L) (STJS000856) at 1:10000 dilution.
Lysates/proteins: 25 µg per lane.
Blocking buffer: 3% nonfat dry milk in TBST.
Detection: ECL Basic Kit
Exposure time: 30s.