

## Anti-CEACAM5 antibody (35-685 aa) [SRM5368] (STJ11107278)

### GENERAL INFORMATION

Product Type	Primary antibodies
Applications	WB/ELISA
Host / Source	Rabbit
Reactivity	Human

### PRODUCT PROPERTIES

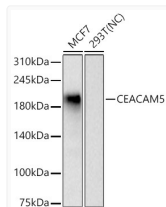
Clonality	Monoclonal
Concentration	Lot specific
Conjugation	Unconjugated
Purification	Affinity purification
Dilution Range	WB:1:6000-1:12000 ELISA:Recommended starting concentration is 1 µg/mL. Please optimize the concentration based on your specific assay requirements.
Formulation	PBS with 0.09% Sodium Azide, 0.05% BSA, 50% Glycerol, pH 7.3.
Isotype	IgG
Molecular Weight	Protein Mw: 77kDa Observed Mw: 200kDa
Storage Instruction	Store at -20°C for up to 1 year from the date of receipt, and avoid repeat freeze-thaw cycles.

### TARGET INFORMATION

Gene ID	<a href="#">1048</a>
Gene Symbol	<a href="#">CEACAM5</a>
UniProt ID	<a href="#">CEAM5_HUMAN</a>
Immunogen Region	35-685 aa
Immunogen Sequence	KLTIESTPFNVAEGKEVLLL VHNLPQHFLFGYSWYKGERVD GNRQIIGYVIGTQQATPGPA YSGREIYPNASLLIQNIQ NDTGFYTLHVIKSDLVNEEA TGQFRVYPELPKPSISSNNS KPVEDKDAVAFTCEPETQDA TYLWWVNNQSLPVSRLQLS NGNRTLTLFNVTRNDTASYK CETQNPVSARRSDSVILNVL YGPDAPTISPLNTSYRSGEN LNLSCHAASNPPAQYSWFV
Specificity	Recombinant fusion protein containing a sequence corresponding to amino acids 35-685 of human CEACAM5 (NP_004354.3).

### ADDITIONAL INFORMATION

Note **STRICTLY FOR FURTHER SCIENTIFIC RESEARCH USE ONLY (RUO). MUST NOT TO BE USED IN DIAGNOSTIC OR THERAPEUTIC APPLICATIONS.**



Western blot analysis of various lysates using CEACAM5 Rabbit mAb (STJ11107278) at 1:12000 dilution incubated overnight at 4°C.  
 Secondary antibody: HRP-conjugated Goat anti-Rabbit IgG (H+L) (STJS000856) at 1:10000 dilution.  
 Lysates/proteins: 25 µg per lane.  
 Blocking buffer: 3% nonfat dry milk in TBST.  
 Detection: ECL Basic Kit  
 Negative control (NC) : 293T  
 Exposure time: 180s.