

Anti-CD42b antibody (15-531 aa) [SRM5367] (STJ11107277)

GENERAL INFORMATION

Product Type	Primary antibodies
Applications	IHC-P/ELISA
Host / Source	Rabbit
Reactivity	Human

PRODUCT PROPERTIES

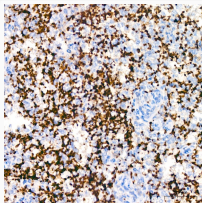
Clonality	Monoclonal
Concentration	Lot specific
Conjugation	Unconjugated
Purification	Affinity purification
Dilution Range	IHC-P:1:200-1:800 ELISA:Recommended starting concentration is 1 µg/mL. Please optimize the concentration based on your specific assay requirements.
Formulation	PBS with 0.09% Sodium Azide, 0.05% BSA, 50% Glycerol, pH 7.3.
Isotype	IgG
Molecular Weight	Protein Mw: 72kDa Observed Mw: Refer to figures
Storage Instruction	Store at -20°C for up to 1 year from the date of receipt, and avoid repeat freeze-thaw cycles.

TARGET INFORMATION

Gene ID	2811
Gene Symbol	GP1BA
UniProt ID	GP1BA_HUMAN
Immunogen Region	15-531 aa
Immunogen Sequence	HPHPICEVSKVASHLEVNC DKRNLTA LPPDL PKD TTIHL SENLLYTFSLATLMPYTRLT QLNLDRC ELTKLQVDG TLPV LGTLDLSHNQLQSLPLLGQT LPALTVLDVSNRSLPLG ALRGLGELQELYLKGNE LKT LPPGLLTPPKLEKLSLANN NLTELPAGLLNGLNLD TLL LQENSLYTI PKGFFGSHLLP FAF LHGNPWLCNCEILYFRR WLQDNAENVVYWKQGV DVK
Specificity	Recombinant fusion protein containing a sequence corresponding to amino acids 15-531 of human CD42b (NP_000164.5).

ADDITIONAL INFORMATION

Note STRICTLY FOR FURTHER SCIENTIFIC RESEARCH USE ONLY (RUO). MUST NOT TO BE USED IN DIAGNOSTIC OR THERAPEUTIC APPLICATIONS.



Immunohistochemistry analysis of paraffin-embedded Human spleen tissue using CD42b Rabbit mAb (STJ11107277) at a dilution of 1:600 (40x lens). High pressure antigen retrieval performed with 0.01M Tris-EDTA Buffer (pH 9.0) prior to immunohistochemistry staining.