

Anti-IRP2 antibody (700-963 aa) [SRM5366] (STJ11107276)

GENERAL INFORMATION

Product Type	Primary antibodies
Applications	WB/ELISA
Host / Source	Rabbit
Reactivity	Human/Mouse/Rat

PRODUCT PROPERTIES

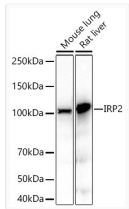
Clonality	Monoclonal
Concentration	Lot specific
Conjugation	Unconjugated
Purification	Affinity purification
Dilution Range	WB:1:2500-1:10000 ELISA:Recommended starting concentration is 1 Mu g/mL. Please optimize the concentration based on your specific assay requirements.
Formulation	PBS with 0.09% Sodium Azide, 0.05% BSA, 50% Glycerol, pH 7.3.
Isotype	IgG
Molecular Weight	Protein Mw: 105kDa Observed Mw: 105KDa
Storage Instruction	Store at -20°C for up to 1 year from the date of receipt, and avoid repeat freeze-thaw cycles.

TARGET INFORMATION

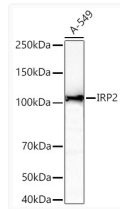
Gene ID	3658
Gene Symbol	IREB2
UniProt ID	IREB2_HUMAN
Immunogen Region	700-963 aa
Immunogen Sequence	SLEAPDSVLFPPWDLKSTYIR CPSFFDKLTKEPIALQAIEN AHVLLYLGDSTVTDHISPAG SIARNSAAAKYLTNRGLTPR EFNSYGARRGNDVMTGTF ANIKLFNKFIGKPAPKTIHF PSGQTLDFEAAELYQKEGI PLIILAGKKYSGNSRDWAA KGPYLLGVKAVLAESYEKIH KDHILIGIGIAPLQFLPGENA DSLGLSGRETFSLTFPEELS PGITLNIQTSTGKVFVIA
Specificity	Recombinant fusion protein containing a sequence corresponding to amino acids 700-963 of human IRP2 (NP_004127.2).

ADDITIONAL INFORMATION

Note **STRICTLY FOR FURTHER SCIENTIFIC RESEARCH USE ONLY (RUO). MUST NOT TO BE USED IN DIAGNOSTIC OR THERAPEUTIC APPLICATIONS.**



Western blot analysis of various lysates using IRP2 Rabbit mAb (STJ11107276) at 1:2500 dilution incubated overnight at 4C.
 Secondary antibody: HRP-conjugated Goat anti-Rabbit IgG (H+L) (STJS000856) at 1:10000 dilution.
 Lysates/proteins: 25 Mu g per lane.
 Blocking buffer: 3% nonfat dry milk in TBST.
 Detection: ECL Basic Kit
 Exposure time: 30s.



Western blot analysis of lysates from A-549 cells using IRP2 Rabbit mAb (STJ11107276) at 1:2500 dilution incubated overnight at 4C.
 Secondary antibody: HRP-conjugated Goat anti-Rabbit IgG (H+L) (STJS000856) at 1:10000 dilution.
 Lysates/proteins: 25 Mu g per lane.
 Blocking buffer: 3% nonfat dry milk in TBST.
 Detection: ECL Basic Kit
 Exposure time: 90s.