

Anti-Annexin A6/Annexin VI antibody (324-673 aa) [SRM5358] (STJ11107267)

GENERAL INFORMATION

Product Type	Primary antibodies
Applications	WB/ELISA
Host / Source	Rabbit
Reactivity	Human/Mouse/Rat

PRODUCT PROPERTIES

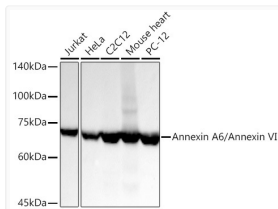
Clonality	Monoclonal
Concentration	Lot specific
Conjugation	Unconjugated
Purification	Affinity purification
Dilution Range	WB:1:23000-1:138000 ELISA:Recommended starting concentration is 1 Mu g/mL. Please optimize the concentration based on your specific assay requirements.
Formulation	PBS with 0.09% Sodium Azide, 0.05% BSA, 50% Glycerol, pH 7.3.
Isotype	IgG
Molecular Weight	Protein Mw: 76kDa Observed Mw: 72kDa
Storage Instruction	Store at -20°C for up to 1 year from the date of receipt, and avoid repeat freeze-thaw cycles.

TARGET INFORMATION

Gene ID	309
Gene Symbol	ANXA6
UniProt ID	ANXA6_HUMAN
Immunogen Region	324-673 aa
Immunogen Sequence	DDDAAGQFFPEAAQVAYQMW ELSAVARVELKGTVRPANDF NPDADAKALRKAMKGLTDE DTIIDITHRSNVQRQQIRQ TFKSHFGRDLMTDLKSEISG DLARLILGLMPPPAHYDAKQ LKKAMEGAGTDEKALIEILA TRTNAEIRAINAYKEDYHK SLEDALSSDTSGHFRRILIS LATGHREEGGENLDQAREDA QVAEILEIADTPSGDKTSL ETRFMTILCTRSYPHLRRV
Specificity	Recombinant fusion protein containing a sequence corresponding to amino acids 324-673 of human Annexin A6/Annexin VI (NP_001146.2).

ADDITIONAL INFORMATION

Note STRICTLY FOR FURTHER SCIENTIFIC RESEARCH USE ONLY (RUO). MUST NOT TO BE USED IN DIAGNOSTIC OR THERAPEUTIC APPLICATIONS.



Western blot analysis of various lysates using Annexin A6/Annexin VI Rabbit mAb (STJ11107267) at 1:23000 dilution incubated overnight at 4C.

Secondary antibody: HRP-conjugated Goat anti-Rabbit IgG (H+L) (STJS000856) at 1:10000 dilution.

Lysates/proteins: 25 Mu g per lane.
Blocking buffer: 3% nonfat dry milk in TBST.
Detection: ECL Basic Kit
Exposure time: 10s.