

Anti-NY-ESO-1 antibody (1-100 aa) [SRM5352] (STJ11107261)

GENERAL INFORMATION

Product Type	Primary antibodies
Applications	WB/ELISA
Host / Source	Rabbit
Reactivity	Human

PRODUCT PROPERTIES

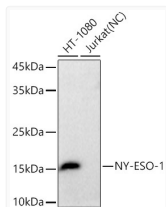
Clonality	Monoclonal
Concentration	Lot specific
Conjugation	Unconjugated
Purification	Affinity purification
Dilution Range	WB:1:24000-1:144000 ELISA:Recommended starting concentration is 1 Mu g/mL. Please optimize the concentration based on your specific assay requirements.
Formulation	PBS with 0.09% Sodium Azide, 0.05% BSA, 50% Glycerol, pH 7.3.
Isotype	IgG
Molecular Weight	Protein Mw: 18kDa Observed Mw: 18kDa
Storage Instruction	Store at -20°C for up to 1 year from the date of receipt, and avoid repeat freeze-thaw cycles.

TARGET INFORMATION

Gene ID	1485/246100
Gene Symbol	CTAG1A.CTAG1B
UniProt ID	CTG1B_HUMAN
Immunogen Region	1-100 aa
Immunogen Sequence	MQAEGRGTGGSTGDADGPGG PGIPDGPGGNAGGPGGEAGAT GGRGPRGAGAARASGPGGGA PRGPHGGAASGLNGCCRCGA RGPESRLLEFYLAMPFATPM
Specificity	A synthetic peptide corresponding to a sequence within amino acids 1-100 of human NY-ESO-1 0.

ADDITIONAL INFORMATION

Note STRICTLY FOR FURTHER SCIENTIFIC RESEARCH USE ONLY (RUO). MUST NOT TO BE USED IN DIAGNOSTIC OR THERAPEUTIC APPLICATIONS.



Western blot analysis of various lysates using NY-ESO-1 Rabbit mAb (STJ11107261) at 1:24000 dilution incubated overnight at 4°C.

Secondary antibody: HRP-conjugated Goat anti-Rabbit IgG (H+L) (STJS000856) at 1:10000 dilution.

Lysates/proteins: 25 Mu g per lane.

Blocking buffer: 3% nonfat dry milk in TBST.

Detection: ECL Basic Kit

Negative control (NC) : Jurkat

Exposure time: 10s.