

## Anti-XRCC2 antibody (1-83 aa) [SRM5351] (STJ11107260)

### GENERAL INFORMATION

Product Type	Primary antibodies
Applications	WB/ELISA
Host / Source	Rabbit
Reactivity	Human/Mouse/Rat

### PRODUCT PROPERTIES

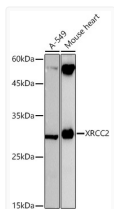
Clonality	Monoclonal
Concentration	Lot specific
Conjugation	Unconjugated
Purification	Affinity purification
Dilution Range	WB:1:1000-1:6000 ELISA:Recommended starting concentration is 1 Mu g/mL. Please optimize the concentration based on your specific assay requirements.
Formulation	PBS with 0.09% Sodium Azide, 0.05% BSA, 50% Glycerol, pH 7.3.
Isotype	IgG
Molecular Weight	Protein Mw: 32kDa Observed Mw: 32kDa
Storage Instruction	Store at -20°C for up to 1 year from the date of receipt, and avoid repeat freeze-thaw cycles.

### TARGET INFORMATION

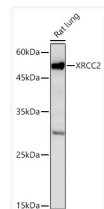
Gene ID	<a href="#">7516</a>
Gene Symbol	<a href="#">XRCC2</a>
UniProt ID	<a href="#">XRCC2_HUMAN</a>
Immunogen Region	1-83 aa
Immunogen Sequence	MCSAFHRAESGTELLARLEG RSSLKEIEPNLFADEDSPVH GDILEFHGPEGTGKTEMLYH LTARCILPKSEGGLEVEVLF IDT
Specificity	Recombinant fusion protein containing a sequence corresponding to amino acids 1-83 of human XRCC2 (NP_005422.1).

### ADDITIONAL INFORMATION

Note **STRICTLY FOR FURTHER SCIENTIFIC RESEARCH USE ONLY (RUO). MUST NOT TO BE USED IN DIAGNOSTIC OR THERAPEUTIC APPLICATIONS.**



Western blot analysis of various lysates using XRCC2 Rabbit mAb (STJ11107260) at 1:1000 dilution incubated overnight at 4C.  
 Secondary antibody: HRP-conjugated Goat anti-Rabbit IgG (H+L) (STJS000856) at 1:10000 dilution.  
 Lysates/proteins: 25 Mu g per lane.  
 Blocking buffer: 3% nonfat dry milk in TBST.  
 Detection: ECL Basic Kit  
 Exposure time: 3s.



Western blot analysis of lysates from Rat lung using XRCC2 Rabbit mAb (STJ11107260) at 1:1000 dilution incubated overnight at 4C.  
 Secondary antibody: HRP-conjugated Goat anti-Rabbit IgG (H+L) (STJS000856) at 1:10000 dilution.  
 Lysates/proteins: 25 Mu g per lane.  
 Blocking buffer: 3% nonfat dry milk in TBST.  
 Detection: ECL Basic Kit  
 Exposure time: 90s.