

Anti-Ret antibody (1000-1100 aa) [SRM5350] (STJ11107259)

GENERAL INFORMATION

Product Type	Primary antibodies
Applications	WB/ELISA
Host / Source	Rabbit
Reactivity	Mouse/Rat

PRODUCT PROPERTIES

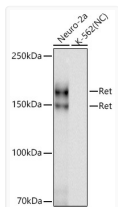
Clonality	Monoclonal
Concentration	Lot specific
Conjugation	Unconjugated
Purification	Affinity purification
Dilution Range	WB:1:1000-1:4000 ELISA:Recommended starting concentration is 1 µg/mL. Please optimize the concentration based on your specific assay requirements.
Formulation	PBS with 0.09% Sodium Azide, 0.05% BSA, 50% Glycerol, pH 7.3.
Isotype	IgG
Molecular Weight	Protein Mw: 124kDa Observed Mw: 150kDa/175kDa
Storage Instruction	Store at -20°C for up to 1 year from the date of receipt, and avoid repeat freeze-thaw cycles.

TARGET INFORMATION

Gene ID	5979
Gene Symbol	RET
UniProt ID	RET_HUMAN
Immunogen Region	1000-1100 aa
Immunogen Sequence	DISKDLEKMMVKRRDYDLA ASTPSDSLIIYDDGLSEEETP LVDCNNAPLPRALPSTWIEN KLYGMSDPNWPGESEVPLTR ADGTNTGFPRYPNDSVYANW M
Specificity	A synthetic peptide corresponding to a sequence within amino acids 1000-1100 of human Ret (NP_066124.1).

ADDITIONAL INFORMATION

Note STRICTLY FOR FURTHER SCIENTIFIC RESEARCH USE ONLY (RUO). MUST NOT TO BE USED IN DIAGNOSTIC OR THERAPEUTIC APPLICATIONS.



Western blot analysis of various lysates using Ret Rabbit mAb (STJ11107259) at 1:1000 dilution incubated overnight at 4°C.

Secondary antibody: HRP-conjugated Goat anti-Rabbit IgG (H+L) (STJS000856) at 1:10000 dilution.

Lysates/proteins: 25 µg per lane.

Blocking buffer: 3% nonfat dry milk in TBST.

Detection: ECL Basic Kit

Negative control (NC) : K-562

Exposure time: 30s.