

Anti-Lamin A/C antibody (403-572 aa) [SMM5342] (STJ11107250)

GENERAL INFORMATION

Product Type	Primary antibodies
Applications	WB/IHC-P/IF/ICC/ELISA
Host / Source	Mouse
Reactivity	Human/Mouse/Rat

PRODUCT PROPERTIES

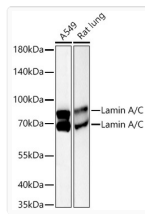
Clonality	Monoclonal
Concentration	Lot specific
Conjugation	Unconjugated
Purification	Affinity purification
Dilution Range	WB:1:5000-1:20000 IHC-P:1:2000-1:20000 IF/CC:1:200-1:800 ELISA:Recommended starting concentration is 1 Mu g/mL. Please optimize the concentration based on your specific assay requirements.
Formulation	PBS with 0.09% Sodium Azide, 0.05% BSA, 50% Glycerol, pH 7.3.
Isotype	IgG
Molecular Weight	Protein Mw: 74kDa Observed Mw: 68/72kDa
Storage Instruction	Store at -20°C for up to 1 year from the date of receipt, and avoid repeat freeze-thaw cycles.

TARGET INFORMATION

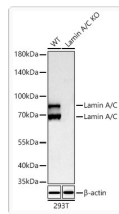
Gene ID	4000
Gene Symbol	LMNA
UniProt ID	LMNA_HUMAN
Immunogen Region	403-572 aa
Immunogen Sequence	SSHSSQTQGGGSVTKKRKLE STESRSSFSQHARTSGRVAV EEVDEEGKFVRLRNKSNEDQ SMGNWQIKRQNGDDPLLTYR FPPKFTLKAGQVVTIWAAGA GATHSPPTDLVWKAQNTWGC GNSLRTALINSTGEEVAMRK LVRSVTVVEDEDEDGDDL HHHHGSHCSS
Specificity	Recombinant fusion protein containing a sequence corresponding to amino acids 403-572 of human Lamin A/C (NP_733821.1).

ADDITIONAL INFORMATION

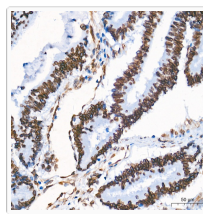
Note	STRICTLY FOR FURTHER SCIENTIFIC RESEARCH USE ONLY (RUO). MUST NOT TO BE USED IN DIAGNOSTIC OR THERAPEUTIC APPLICATIONS.
------	---



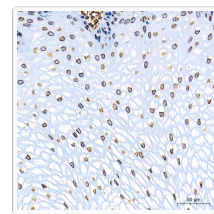
Western blot analysis of various lysates using [KO Validated] Lamin A/C Mouse mAb (STJ11107250) at 1:10000 dilution incubated overnight at 4C. Secondary antibody: HRP Goat Anti-Mouse IgG (H+L) antibody (STJS000854) at 1:10000 dilution. Lysates/proteins: 25 Mu g per lane. Blocking buffer: 3% nonfat dry milk in TBST. Detection: ECL Basic Kit Exposure time: 45s.



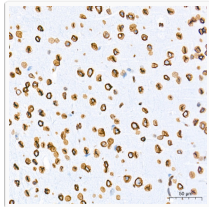
Western blot analysis of lysates from wild type (WT) and Lamin A/C knockout (KO) 293T cells using [KO Validated] Lamin A/C Mouse mAb (STJ11107250) at 1:10000 dilution incubated overnight at 4C. Secondary antibody: HRP Goat Anti-Mouse IgG (H+L) antibody (STJS000854) at 1:10000 dilution. Lysates/proteins: 25 Mu g per lane. Blocking buffer: 3% nonfat dry milk in TBST. Detection: ECL Basic Kit Exposure time: 90s.



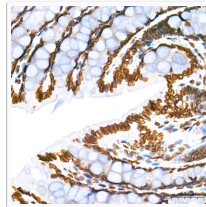
Immunohistochemistry analysis of paraffin-embedded Human colon carcinoma tissue using [KO Validated] Lamin A/C Mouse mAb (STJ11107250) at a dilution of 1:10000 (40x lens). High pressure antigen retrieval performed with 0. 01M Tris-EDTA Buffer (pH 9. 0) prior to immunohistochemistry staining.



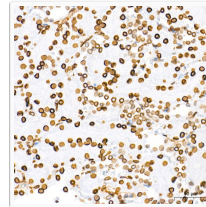
Immunohistochemistry analysis of paraffin-embedded Human esophagus tissue using [KO Validated] Lamin A/C Mouse mAb (STJ11107250) at a dilution of 1:10000 (40x lens). High pressure antigen retrieval performed with 0. 01M Tris-EDTA Buffer (pH 9. 0) prior to immunohistochemistry staining.



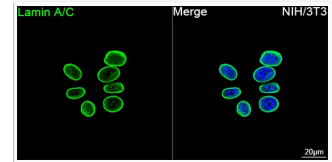
Immunohistochemistry analysis of paraffin-embedded Mouse brain tissue using [KO Validated] Lamin A/C Mouse mAb (STJ11107250) at a dilution of 1:10000 (40x lens). High pressure antigen retrieval performed with 0. 01M Tris-EDTA Buffer (pH 9. 0) prior to immunohistochemistry staining.



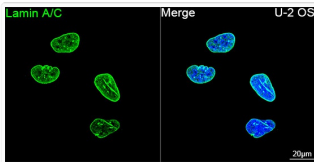
Immunohistochemistry analysis of paraffin-embedded Mouse colon tissue using [KO Validated] Lamin A/C Mouse mAb (STJ11107250) at a dilution of 1:10000 (40x lens). High pressure antigen retrieval performed with 0. 01M Tris-EDTA Buffer (pH 9. 0) prior to immunohistochemistry staining.



Immunohistochemistry analysis of paraffin-embedded Rat kidney tissue using [KO Validated] Lamin A/C Mouse mAb (STJ11107250) at a dilution of 1:10000 (40x lens). High pressure antigen retrieval performed with 0. 01M Tris-EDTA Buffer (pH 9. 0) prior to immunohistochemistry staining.



Confocal imaging of NIH/3T3 cells using [KO Validated] Lamin A/C Mouse mAb (STJ11107250, dilution 1:200) followed by a further incubation with ABflo® 488-conjugated Goat Anti-Mouse IgG (H+L) antibody (STJS001209, dilution 1:500) (Green). DAPI was used for nuclear staining (Blue). Objective: 100x.



Confocal imaging of U-2 OS cells using [KO Validated] Lamin A/C Mouse mAb (STJ11107250, dilution 1:200) followed by a further incubation with ABflo® 488-conjugated Goat Anti-Mouse IgG (H+L) antibody (STJS001209, dilution 1:500) (Green). DAPI was used for nuclear staining (Blue). Objective: 100x.