

## Anti-REPIN1 antibody (376-567 aa) [SRM5297] (STJ11107200)

### GENERAL INFORMATION

Product Type	Primary antibodies
Applications	WB/IHC-P/ELISA
Host / Source	Rabbit
Reactivity	Human

### PRODUCT PROPERTIES

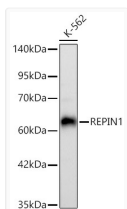
Clonality	Monoclonal
Concentration	Lot specific
Conjugation	Unconjugated
Purification	Affinity purification
Dilution Range	WB:1:10000-1:48000 IHC-P:1:50-1:200 ELISA:Recommended starting concentration is 1 µg/mL. Please optimize the concentration based on your specific assay requirements.
Formulation	PBS with 0.05% Proclin300, 0.05% BSA, 50% Glycerol, pH 7.3.
Isotype	IgG
Molecular Weight	Protein Mw: 64kDa Observed Mw: 64kDa

### TARGET INFORMATION

Gene ID	<a href="#">29803</a>
Gene Symbol	<a href="#">REPIN1</a>
UniProt ID	<a href="#">REPI1_HUMAN</a>
Immunogen Region	376-567 aa
Immunogen Sequence	SCDDCGRSFRLERFLRAHQ R QHTGERPFTCAECGKNFGKK THLVAHSRVHSGERPFACEE CGRRFSGQSHLAAHRRDHAP DRPFVCPDCGKAFRHKPYLA AHRRIHTGEKPYVCPDCGKA FSQKSNLVSHRRIHTGERPY ACPDCDRSFSQKSNLITHRK SHIRDGAFCCAICGQTFDDE ERLLAHQKKHVD
Specificity	Recombinant fusion protein containing a sequence corresponding to amino acids 376-567 of human REPIN1 (NP_037532.2).

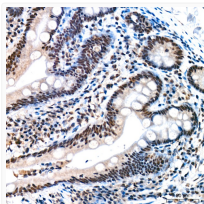
### ADDITIONAL INFORMATION

Note STRICTLY FOR FURTHER SCIENTIFIC RESEARCH USE ONLY (RUO). MUST NOT TO BE USED IN DIAGNOSTIC OR THERAPEUTIC APPLICATIONS.

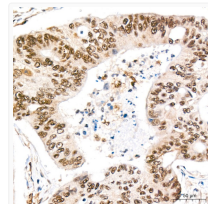


Western blot analysis of lysates from K-562 cells using REPIN1 Rabbit mAb (STJ11107200) at 1:40000 dilution incubated overnight at 4°C. Secondary antibody: HRP-conjugated Goat anti-Rabbit IgG (H+L) (STJS000856) at 1:10000 dilution.

Lysates/proteins: 25 µg per lane.  
Blocking buffer: 3% nonfat dry milk in TBST.  
Detection: ECL Basic Kit  
Exposure time: 45s.



Immunohistochemistry analysis of paraffin-embedded Human colon tissue using REPIN1 Rabbit mAb (STJ11107200) at a dilution of 1:200 (40x lens). High pressure antigen retrieval performed with 0.01M Citrate Buffer (pH 6.0) prior to immunohistochemistry staining.



Immunohistochemistry analysis of paraffin-embedded Human colon carcinoma tissue using REPIN1 Rabbit mAb (STJ11107200) at a dilution of 1:200 (40x lens). High pressure antigen retrieval performed with 0.01M Citrate Buffer (pH 6.0) prior to immunohistochemistry staining.