

## Anti-MRC2 antibody (35-513 aa) [SRM5290] (STJ11107192)

### GENERAL INFORMATION

Product Type	Primary antibodies
Applications	WB/ELISA
Host / Source	Rabbit
Reactivity	Human

### PRODUCT PROPERTIES

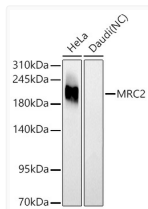
Clonality	Monoclonal
Concentration	Lot specific
Conjugation	Unconjugated
Purification	Affinity purification
Dilution Range	WB:1:1000-1:2000 ELISA:Recommended starting concentration is 1 µg/mL. Please optimize the concentration based on your specific assay requirements.
Formulation	PBS with 0.05% Proclin300, 0.05% BSA, 50% Glycerol, pH 7.3.
Isotype	IgG
Molecular Weight	Protein Mw: 167kDa Observed Mw: 180kDa
Storage Instruction	Store at -20°C for up to 1 year from the date of receipt, and avoid repeat freeze-thaw cycles.

### TARGET INFORMATION

Gene ID	<a href="#">9902</a>
Gene Symbol	<a href="#">MRC2</a>
UniProt ID	<a href="#">MRC2_HUMAN</a>
Immunogen Region	35-513 aa
Immunogen Sequence	DAALPEPNVFLIFSHGLQGC LEAQGGQVRVTPACNTSLPA QRWKWVSRNRLFNLGTMQCL GTGWPGTNNTTASLGMYECDR EALNLRWHCRTLGDQLSLLL GARTSNISKPGTLERGDQTR SGQWRIYGSEEDLCALPYHE VYTIQGNSHGKPCPTIPFKYD NQWFHGCSTGREDGHLWCA TTQDYGKDERWGFPIKSNDCETFWDKDQLTDSYQFNQ STLSWREAWASCEQQGADL
Specificity	Recombinant fusion protein containing a sequence corresponding to amino acids 35-513 of human MRC2 (NP_006030.2).

### ADDITIONAL INFORMATION

Note **STRICTLY FOR FURTHER SCIENTIFIC RESEARCH USE ONLY (RUO). MUST NOT TO BE USED IN DIAGNOSTIC OR THERAPEUTIC APPLICATIONS.**



Western blot analysis of various lysates using MRC2 Rabbit mAb (STJ11107192) at 1:1000 dilution incubated overnight at 4°C.  
 Secondary antibody: HRP-conjugated Goat anti-Rabbit IgG (H+L) (STJS000856) at 1:10000 dilution.  
 Lysates/proteins: 25 µg per lane.  
 Blocking buffer: 3% nonfat dry milk in TBST.  
 Detection: ECL Basic Kit  
 Negative control (NC) : Daudi  
 Exposure time: 60s.