

Anti-HSP90B1 antibody (616-715 aa) [SRM5275] (STJ11107177)
GENERAL INFORMATION

Product Type	Primary antibodies
Applications	WB/IHC-P/ELISA
Host / Source	Rabbit
Reactivity	Human/Mouse/Rat

PRODUCT PROPERTIES

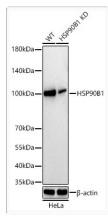
Clonality	Monoclonal
Concentration	Lot specific
Conjugation	Unconjugated
Purification	Affinity purification
Dilution Range	WB:1:1000-1:5000 IHC-P:1:50-1:200 ELISA:Recommended starting concentration is 1 Mu g/mL. Please optimize the concentration based on your specific assay requirements.
Formulation	PBS with 0.05% Proclin300, 0.05% BSA, 50% Glycerol, pH 7.3.
Isotype	IgG
Molecular Weight	Protein Mw: 92kDa Observed Mw: 100kDa
Storage Instruction	Store at -20°C for up to 1 year from the date of receipt, and avoid repeat freeze-thaw cycles.

TARGET INFORMATION

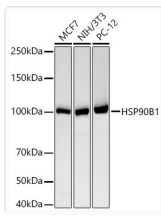
Gene ID	7184
Gene Symbol	HSP90B1
UniProt ID	ENPL_HUMAN
Immunogen Region	616-715 aa
Immunogen Sequence	EPLLNWMKDKALKDKIEKAV VSQRLTESPCALVASQYGWS GNMERIMKAQAYQTGKDIST NYYASQKKTFEINPRHPLIR DMLRRIKEDEDDKTVLDLAV
Specificity	A synthetic peptide corresponding to a sequence within amino acids 616-715 of human HSP90B1 (NP_003290.1).

ADDITIONAL INFORMATION

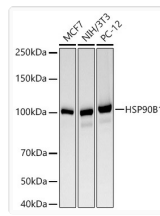
Note	STRICTLY FOR FURTHER SCIENTIFIC RESEARCH USE ONLY (RUO). MUST NOT TO BE USED IN DIAGNOSTIC OR THERAPEUTIC APPLICATIONS.
------	---



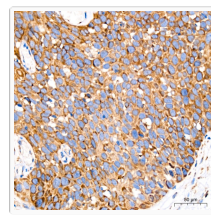
Western blot analysis of lysates from wild type (WT) and HSP90B1 knockdown (KD) HeLa cells using [KD Validated] HSP90B1 Rabbit mAb (STJ11107177) at 1:2000 dilution incubated overnight at 4C. Secondary antibody: HRP-conjugated Goat anti-Rabbit IgG (H+L) (STJS000856) at 1:10000 dilution. Lysates/proteins: 25 Mu g per lane. Blocking buffer: 3% nonfat dry milk in TBST. Detection: ECL Basic Kit Exposure time: 20s.



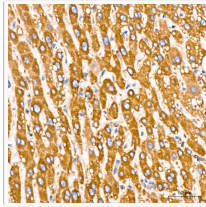
Western blot analysis of various lysates using [KD Validated] HSP90B1 Rabbit mAb (STJ11107177) at 1:2000 dilution incubated overnight at 4C. Secondary antibody: HRP-conjugated Goat anti-Rabbit IgG (H+L) (STJS000856) at 1:10000 dilution. Lysates/proteins: 25 Mu g per lane. Blocking buffer: 3% nonfat dry milk in TBST. Detection: ECL Basic Kit Exposure time: 60s.



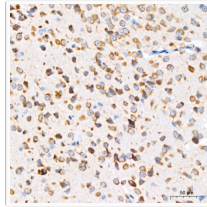
Western blot analysis of various lysates using [KD Validated] HSP90B1 Rabbit mAb (STJ11107177) at 1:2000 dilution incubated overnight at 4C. Secondary antibody: HRP-conjugated Goat anti-Rabbit IgG (H+L) (STJS000856) at 1:10000 dilution. Lysates/proteins: 25 Mu g per lane. Blocking buffer: 3% nonfat dry milk in TBST. Detection: ECL Basic Kit Exposure time: 60s.



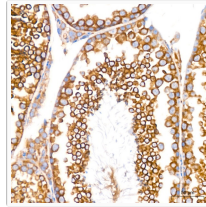
Immunohistochemistry analysis of paraffin-embedded Human cervix cancer tissue using [KD Validated] HSP90B1 Rabbit mAb (STJ11107177) at a dilution of 1:200 (40x lens). High pressure antigen retrieval performed with 0.01M Citrate Buffer (pH 6.0) prior to immunohistochemistry staining.



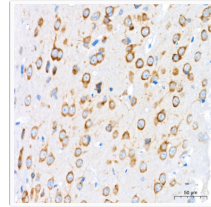
Immunohistochemistry analysis of paraffin-embedded Human liver tissue using [KD Validated] HSP90B1 Rabbit mAb (STJ11107177) at a dilution of 1:200 (40x lens). High pressure antigen retrieval performed with 0.01M Citrate Buffer (pH 6.0) prior to immunohistochemistry staining.



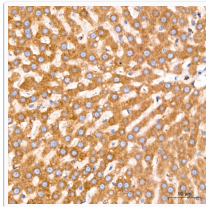
Immunohistochemistry analysis of paraffin-embedded Mouse brain tissue using [KD Validated] HSP90B1 Rabbit mAb (STJ11107177) at a dilution of 1:200 (40x lens). High pressure antigen retrieval performed with 0.01M Citrate Buffer (pH 6.0) prior to immunohistochemistry staining.



Immunohistochemistry analysis of paraffin-embedded Mouse testis tissue using [KD Validated] HSP90B1 Rabbit mAb (STJ11107177) at a dilution of 1:200 (40x lens). High pressure antigen retrieval performed with 0.01M Citrate Buffer (pH 6.0) prior to immunohistochemistry staining.



Immunohistochemistry analysis of paraffin-embedded Rat brain tissue using [KD Validated] HSP90B1 Rabbit mAb (STJ11107177) at a dilution of 1:200 (40x lens). High pressure antigen retrieval performed with 0.01M Citrate Buffer (pH 6.0) prior to immunohistochemistry staining.



Immunohistochemistry analysis of paraffin-embedded Rat liver tissue using [KD Validated] HSP90B1 Rabbit mAb (STJ11107177) at a dilution of 1:200 (40x lens). High pressure antigen retrieval performed with 0.01M Citrate Buffer (pH 6.0) prior to immunohistochemistry staining.