

## Anti-FRA1 antibody (1-100 aa) [SRM5249] (STJ11107151)

### GENERAL INFORMATION

Product Type	Primary antibodies
Applications	WB/ELISA
Host / Source	Rabbit
Reactivity	Human

### PRODUCT PROPERTIES

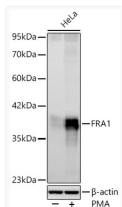
Clonality	Monoclonal
Concentration	Lot specific
Conjugation	Unconjugated
Purification	Affinity purification
Dilution Range	WB:1:2000-1:10000 ELISA:Recommended starting concentration is 1 Mu g/mL. Please optimize the concentration based on your specific assay requirements.
Formulation	PBS with 0.09% Sodium Azide, 0.05% BSA, 50% Glycerol, pH 7.3
Isotype	IgG
Molecular Weight	Protein Mw: 29kDa Observed Mw: 40kDa
Storage Instruction	Store at -20°C for up to 1 year from the date of receipt, and avoid repeat freeze-thaw cycles.

### TARGET INFORMATION

Gene ID	<a href="#">8061</a>
Gene Symbol	<a href="#">FOSL1</a>
UniProt ID	<a href="#">FOSL1_HUMAN</a>
Immunogen Region	1-100 aa
Immunogen Sequence	MFRDFGEPGPSSGNGGGYGG PAQPPAAAQAAQQKFHLVPS INTMSGSQELQWMVQPHFLG PSSYPRLTYPQYSPQPFRP GVIRALGPPPGVRRRPPCEQI
Specificity	A synthetic peptide corresponding to a sequence within amino acids 1-100 of human FRA1 (NP_005429.1).

### ADDITIONAL INFORMATION

Note STRICTLY FOR FURTHER SCIENTIFIC RESEARCH USE ONLY (RUO). MUST NOT TO BE USED IN DIAGNOSTIC OR THERAPEUTIC APPLICATIONS.



Western blot analysis of lysates from HeLa cells using FRA1 Rabbit mAb (STJ11107151) at 1:10000 dilution incubated overnight at 4°C. HeLa cells were treated by PMA (100 ng/ml) at 37°C for 4 hours after serum-starvation overnight.

Secondary antibody: HRP-conjugated Goat anti-Rabbit IgG (H+L) (STJS000856) at 1:10000 dilution.

Lysates/proteins: 30 Mu g per lane.

Blocking buffer: 3% nonfat dry milk in TBST.

Detection: ECL Basic Kit

Exposure time: 30s.