

Anti-Human IgG2-Fc antibody (99-326 aa) [SRM5240] (STJ11107129)

GENERAL INFORMATION

Product Type	Primary antibodies
Applications	WB/ELISA
Host / Source	Rabbit
Reactivity	Human

PRODUCT PROPERTIES

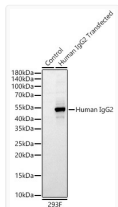
Clonality	Monoclonal
Concentration	Lot specific
Conjugation	Unconjugated
Purification	Affinity purification
Dilution Range	WB:1:1000-1:4000 ELISA:Recommended starting concentration is 1 Mu g/mL. Please optimize the concentration based on your specific assay requirements.
Formulation	PBS with 0.09% Sodium Azide, 0.05% BSA, 50% Glycerol, pH 7.3.
Isotype	IgG
Molecular Weight	Protein Mw: 44kDa Observed Mw: 50kDa
Storage Instruction	Store at -20°C for up to 1 year from the date of receipt, and avoid repeat freeze-thaw cycles.

TARGET INFORMATION

Gene Symbol	IGHG2 Uniprot ID= IGHG2_HUMAN "
Immunogen Region	99-326 aa
Immunogen Sequence	EPRIKPKSTPPGSSCPPGNI LGGPSVFIFPPKPKDALMIS LTPKVTCVVVDVSEDDPDVH VSWFVDNKEVHTAWTQPREA QYNSTFRVVSALPIQHQQDWM RGKEFKCKVNNKALPAPIER TISKPKGRAQTPQVYTIPPP REQMSKKKVSLLCLVTNFFS EAISVEWERNGELEQDYKNT PPILDSDGTYFLYSKLTVDT DSWLQGEIFTCSVVHEALHN HHTQKNLSRSPGK
Specificity	Recombinant fusion protein containing a sequence corresponding to amino acids 99-326 of human IgG2 (Fc) (P01859).

ADDITIONAL INFORMATION

Note STRICTLY FOR FURTHER SCIENTIFIC RESEARCH USE ONLY (RUO). MUST NOT TO BE USED IN DIAGNOSTIC OR THERAPEUTIC APPLICATIONS.



Western blot analysis of lysates from wild type (WT) and 293F cells transfected with Human IgG2 using Rabbit Anti-Human IgG2 (Fc) mAb (STJ11107129) at 1:1000 dilution incubated overnight at 4C.

Secondary antibody: HRP-conjugated Goat anti-Rabbit IgG (H+L) (STJS000856) at 1:10000 dilution.

Lysates/proteins: 20 Mu g per lane.

Blocking buffer: 3% nonfat dry milk in TBST.

Detection: ECL Basic Kit (Exposure time: 30s.