

Anti-IFN-beta antibody (1-182 aa) [SRM5227] (STJ11107109)

GENERAL INFORMATION

Product Type	Primary antibodies
Applications	WB/ELISA
Host / Source	Rabbit
Reactivity	Mouse

PRODUCT PROPERTIES

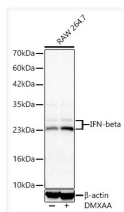
Clonality	Monoclonal
Concentration	Lot specific
Conjugation	Unconjugated
Purification	Affinity purification
Dilution Range	WB:1:1000-1:4000 ELISA:Recommended starting concentration is 1 Mu g/mL. Please optimize the concentration based on your specific assay requirements.
Formulation	PBS with 0.05% Proclin300, 0.05% BSA, 50% Glycerol, pH 7.3.
Isotype	IgG
Molecular Weight	Protein Mw: 22kDa Observed Mw: 24kDa/26kDa
Storage Instruction	Store at -20°C for up to 1 year from the date of receipt, and avoid repeat freeze-thaw cycles.

TARGET INFORMATION

Gene ID	15977
Gene Symbol	Ifnb1
UniProt ID	IFNB_MOUSE
Immunogen Region	1-182 aa
Immunogen Sequence	MNNRWILHAAFLLCFSTTAL SINYKQLQLQERTNIRKQCQE LLEQLNGKINLTYRADFKIP MEMTEKMQKSYTAFAIQEML QNVFLVFRNFFSSTGWNETI VVRLLEDLHQQTVFLKTVLE EKQEERLTWEMSSTALHLKS YYWRVQRYLKLKMKYNSYAWM VVRAEIFRNFILIRLRTRNF QN
Specificity	Recombinant fusion protein containing a sequence corresponding to amino acids 1-182 of mouse IFN-beta (NP_034640.1)

ADDITIONAL INFORMATION

Note STRICTLY FOR FURTHER SCIENTIFIC RESEARCH USE ONLY (RUO). MUST NOT TO BE USED IN DIAGNOSTIC OR THERAPEUTIC APPLICATIONS.



Western blot analysis of lysates from RAW 264.7 cells using IFN-beta Rabbit mAb (STJ11107109) at 1:1000 dilution incubated overnight at 4°C. Raw264.7 cells were treated by DMXAA (50 ug/mL) for 7 hours after serum-starvation overnight.

Secondary antibody: HRP-conjugated Goat anti-Rabbit IgG (H+L) (STJS000856) at 1:10000 dilution.

Lysates/proteins: 30 Mu g per lane.

Blocking buffer: 3% nonfat dry milk in TBST.

Detection: ECL Basic Kit

Exposure time: 20s.