

## Anti-FAP antibody (481-580 aa) (STJ11107106)

### GENERAL INFORMATION

Product Type	Primary antibodies
Applications	IF/ICC/ELISA
Host / Source	Rabbit
Reactivity	Human

### PRODUCT PROPERTIES

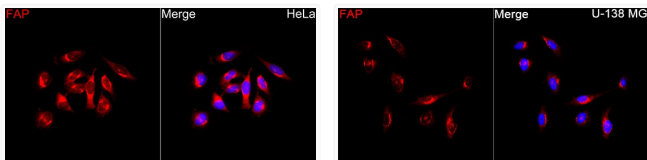
Clonality	Polyclonal
Concentration	Lot specific
Conjugation	Unconjugated
Purification	Affinity purification
Dilution Range	IF/ICC:1:50-1:200 ELISA:Recommended starting concentration is 1 µg/mL. Please optimize the concentration based on your specific assay requirements.
Formulation	PBS with 0.05% Proclin300, 50% Glycerol, pH 7.3.
Isotype	IgG
Molecular Weight	Protein Mw: 88kDa Observed Mw: Refer to figures
Storage Instruction	Store at -20°C for up to 1 year from the date of receipt, and avoid repeat freeze-thaw cycles.

### TARGET INFORMATION

Gene ID	<a href="#">2191</a>
Gene Symbol	<a href="#">FAP</a>
UniProt ID	<a href="#">SEPR_HUMAN</a>
Immunogen Region	481-580 aa
Immunogen Sequence	TDQEKILEENKELENALKN IQLPKEEIKKLEVDEITLWY KMILPPQFDRSKKYPLLIQV YGGPCSQSVRSVFAVNWISY LASKEGMVIALVDGRGTAFQ
Specificity	A synthetic peptide corresponding to a sequence within amino acids 481-580 of human FAP (NP_004451.2).

### ADDITIONAL INFORMATION

Note STRICTLY FOR FURTHER SCIENTIFIC RESEARCH USE ONLY (RUO). MUST NOT TO BE USED IN DIAGNOSTIC OR THERAPEUTIC APPLICATIONS.



Immunofluorescence analysis of HeLa cells using FAP Rabbit pAb (STJ11107106) at a dilution of 1:100 (40x lens). Secondary antibody: Cy3-conjugated Goat anti-Rabbit IgG (H+L) (STJS001166) at 1:500 dilution. Blue: DAPI for nuclear staining.

Immunofluorescence analysis of U-138 MG cells using FAP Rabbit pAb (STJ11107106) at a dilution of 1:100 (40x lens). Secondary antibody: Cy3-conjugated Goat anti-Rabbit IgG (H+L) (STJS001166) at 1:500 dilution. Blue: DAPI for nuclear staining.