

Anti-SERPINA3 antibody (24-423 aa) (STJ11107100)

GENERAL INFORMATION

Product Type	Primary antibodies
Applications	WB/ELISA
Host / Source	Rabbit
Reactivity	Human

PRODUCT PROPERTIES

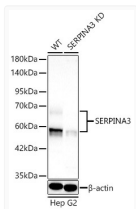
Clonality	Polyclonal
Concentration	Lot specific
Conjugation	Unconjugated
Purification	Affinity purification
Dilution Range	WB:1:500-1:1000 ELISA:Recommended starting concentration is 1 Mu g/mL. Please optimize the concentration based on your specific assay requirements.
Formulation	PBS with 0.05% Proclin300, 50% Glycerol, pH 7.3.
Isotype	IgG
Molecular Weight	Protein Mw: 48kDa Observed Mw: 50-70kDa
Storage Instruction	Store at -20°C for up to 1 year from the date of receipt, and avoid repeat freeze-thaw cycles.

TARGET INFORMATION

Gene ID	12
Gene Symbol	SERPINA3
UniProt ID	AACT_HUMAN
Immunogen Region	24-423 aa
Immunogen Sequence	HPNSPLDEENLTQENQDRGT HVDLGLASANVDFAFSLYKQ LVLKAPDKNVIFSPLSISTA LAFLSLGAHNTTLTEILKGL KFNL TETSEAEIHQS FQHLL RTLNQSSDELQLSMGNAMFV KEQLSLLDRFTEDAKRLYGS EAFATDFQDSAAAKKLINDY VKNGTRGKITDLIKDLSQT MMVLVNYIFFKAKWEMPFD P QDTHQSRFYLKSKKWMVPM MSLHHLTIPYFRDEELSCT
Specificity	Recombinant fusion protein containing a sequence corresponding to amino acids 24-423 of human SERPINA3 (NP_001076.2).

ADDITIONAL INFORMATION

Note STRICTLY FOR FURTHER SCIENTIFIC RESEARCH USE ONLY (RUO). MUST NOT TO BE USED IN DIAGNOSTIC OR THERAPEUTIC APPLICATIONS.



Western blot analysis of lysates from wild type (WT) and SERPINA3 knockdown (KD) Hep G2 cells using [KD Validated] SERPINA3 Rabbit pAb (STJ11107100) at 1:1000 dilution incubated overnight at 4°C.

Secondary antibody: HRP-conjugated Goat anti-Rabbit IgG (H+L) (STJS000856) at 1:10000 dilution.

Lysates/proteins: 25 Mu g per lane.

Blocking buffer: 3% nonfat dry milk in TBST.

Detection: ECL Basic Kit (