

Anti-KDM2B antibody (1059-1336 aa) (STJ11107090)

GENERAL INFORMATION

Product Type	Primary antibodies
Applications	WB/ELISA
Host / Source	Rabbit
Reactivity	Human

PRODUCT PROPERTIES

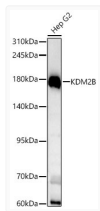
Clonality	Polyclonal
Concentration	Lot specific
Conjugation	Unconjugated
Purification	Affinity purification
Dilution Range	WB:1:500-1:1000 ELISA:Recommended starting concentration is 1 Mu g/mL. Please optimize the concentration based on your specific assay requirements.
Formulation	PBS with 0.05% Proclin300, 50% Glycerol, pH 7.3.
Isotype	IgG
Molecular Weight	Protein Mw: 153kDa Observed Mw: 180kDa
Storage Instruction	Store at -20°C for up to 1 year from the date of receipt, and avoid repeat freeze-thaw cycles.

TARGET INFORMATION

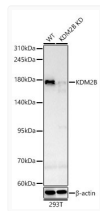
Gene ID	84678
Gene Symbol	KDM2B
UniProt ID	KDM2B_HUMAN
Immunogen Region	1059-1336 aa
Immunogen Sequence	DGAAHVMHREVWMAVFSYLS HQDLCVCMRVCRTWNRWCCD KRLWTRIDLNHCKSITPLML SGIIRROPVSLDLSWTNISK KQLSWLINRLPGLRDLVLSG CSWIAVSALCSSSCPLLRTL DVQWVEGLKDAQMRDLSPP TDNRPGQMDNRSKLRNIVEL RLAGLDITDASLRLLIRHMP LLSKLHLSYCNHVTDQSINL LTAVGTTTRDSLTEINLSDC NKVTDQCLSFFKRCGNICH
Specificity	Recombinant fusion protein containing a sequence corresponding to amino acids 1059-1336 of human KDM2B (NP_115979.3).

ADDITIONAL INFORMATION

Note **STRICTLY FOR FURTHER SCIENTIFIC RESEARCH USE ONLY (RUO). MUST NOT TO BE USED IN DIAGNOSTIC OR THERAPEUTIC APPLICATIONS.**



Western blot analysis of lysates from Hep G2 cells using [KD Validated] KDM2B Rabbit pAb (STJ11107090) at 1:1000 dilution incubated overnight at 4°C.
Secondary antibody: HRP-conjugated Goat anti-Rabbit IgG (H+L) (STJS000856) at 1:10000 dilution.
Lysates/proteins: 25 Mu g per lane.
Blocking buffer: 3% nonfat dry milk in TBST.
Detection: ECL Basic Kit (



Western blot analysis of lysates from 293T cells using [KD Validated] KDM2B Rabbit pAb (STJ11107090) at 1:1000 dilution incubated overnight at 4°C.
Secondary antibody: HRP-conjugated Goat anti-Rabbit IgG (H+L) (STJS000856) at 1:10000 dilution.
Lysates/proteins: 25 Mu g per lane.
Blocking buffer: 3% nonfat dry milk in TBST.
Detection: ECL Basic Kit (