

Anti-Goat IgG-Fab antibody [SRM5207] (STJ11107084)

GENERAL INFORMATION

Product Type	Primary antibodies
Applications	WB/FC/ELISA
Host / Source	Rabbit
Reactivity	Goat

PRODUCT PROPERTIES

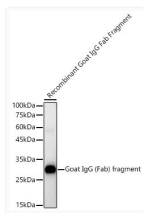
Clonality	Monoclonal
Concentration	Lot specific
Conjugation	Unconjugated
Purification	Affinity purification
Dilution Range	WB:1:1000-1:5000 FC:1:500-1:1000 ELISA:Recommended starting concentration is 1 Mu g/mL. Please optimize the concentration based on your specific assay requirements.
Formulation	PBS with 0.05% Proclin300, 0.05% BSA, 50% Glycerol, pH 7.3.
Isotype	IgG
Molecular Weight	25kDa

TARGET INFORMATION

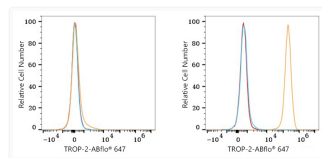
Specificity	Recombinant protein of Goat IgG (Fab) fragment.
-------------	---

ADDITIONAL INFORMATION

Note **STRICTLY FOR FURTHER SCIENTIFIC RESEARCH USE ONLY (RUO). MUST NOT TO BE USED IN DIAGNOSTIC OR THERAPEUTIC APPLICATIONS.**



Western blot analysis of recombinant Goat IgG Fab fragment using Rabbit Anti-Goat IgG (Fab) fragment mAb (STJ11107084) at 1:1900 dilution. Lysates/proteins: 100ng per lane. Blocking buffer: 3% nonfat dry milk in TBST. Detection: ECL Basic Kit. Exposure time: 180s.



Flow cytometry: 1×10^6 Jurkat cells (negative control, left) and A-431 cells (right) were surface-stained with Human TROP-2 Antibody (2 Mu g/mL, orange line) or Rabbit Anti-Goat IgG (Fab) fragment mAb (STJ11107084, 5 Mu I/Test, blue line), follow by Alexa Fluor® 647 conjugated goat anti-rabbit pAb staining. Non-fluorescently stained cells were used as blank control (red line). Rabbit Anti-Goat IgG (Fab) fragment mAb (STJ11107084, 5 Mu I/Test) was used as a secondary antibody.