

Anti-Vinculin antibody (1-258 aa) (STJ11107081)

GENERAL INFORMATION

Product Type	Primary antibodies
Applications	WB/IF/ICC/ELISA
Host / Source	Rabbit
Reactivity	Human/Mouse/Rat

PRODUCT PROPERTIES

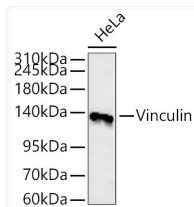
Clonality	Polyclonal
Concentration	Lot specific
Conjugation	Unconjugated
Purification	Affinity purification
Dilution Range	WB:1:500-1:1000 IF/CC:1:50-1:200 ELISA:Recommended starting concentration is 1 Mu g/mL. Please optimize the concentration based on your specific assay requirements.
Formulation	PBS with 0.05% Proclin300, 50% Glycerol, pH 7.3.
Isotype	IgG
Molecular Weight	Protein Mw: 124kDa Observed Mw: 130kDa
Storage Instruction	Store at -20°C for up to 1 year from the date of receipt, and avoid repeat freeze-thaw cycles.

TARGET INFORMATION

Gene ID	7414
Gene Symbol	VCL
UniProt ID	VINC_HUMAN
Immunogen Region	1-258 aa
Immunogen Sequence	MPV FHTRTIESILEPVAQQI SHLVIMHEEGEVDGKAIPDL TAPVAAVQAAVSNLVRVGKE TVQTTEQILKRDMPPAFIK VENACTKLVQAAQMLQSDPY SVPARDYLIDGSRGILSGTS DLLLTFDEAEVRKIIRVCKG ILEYLTVAEIVETMEDLVTY TKNLPGPMTKMAKMIDERQQ ELTHQEHRVMLVNSMNTVKE LLPVLISAMKIFVTTKNSKN QGIEEALKNRNFTVEKMSA
Specificity	Recombinant fusion protein containing a sequence corresponding to amino acids 1-258 of human Vinculin (NP_054706.1).

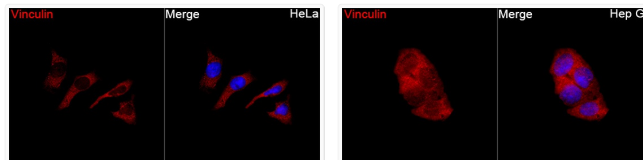
ADDITIONAL INFORMATION

Note **STRICTLY FOR FURTHER SCIENTIFIC RESEARCH USE ONLY (RUO). MUST NOT TO BE USED IN DIAGNOSTIC OR THERAPEUTIC APPLICATIONS.**



Western blot analysis of lysates from HeLa cells using Vinculin Rabbit pAb (STJ11107081) at 1:1000 dilution incubated overnight at 4°C. Secondary antibody: HRP-conjugated Goat anti-Rabbit IgG (H+L) (STJS000856) at 1:10000 dilution.

Lysates/proteins: 25 Mu g per lane.
 Blocking buffer: 3% nonfat dry milk in TBST.
 Detection: ECL Basic Kit
 Exposure time: 45s.



Immunofluorescence analysis of HeLa cells using Vinculin Rabbit pAb (STJ11107081) at a dilution of 1:100 (40x lens). Secondary antibody: Cy3-conjugated Goat anti-Rabbit IgG (H+L) (STJS001166) at 1:500 dilution. Blue: DAPI for nuclear staining.

Immunofluorescence analysis of Hep G2 cells using Vinculin Rabbit pAb (STJ11107081) at a dilution of (40x lens). Secondary antibody: Cy3-conjugated Goat anti-Rabbit IgG (H+L) (STJS001166) at 1:500 dilution. Blue: DAPI for nuclear staining.