

## Anti-ABCC5/MRP5 antibody (1101-1200 aa) (STJ11107079)

### GENERAL INFORMATION

Product Type	Primary antibodies
Applications	IF/ICC/ELISA
Host / Source	Rabbit
Reactivity	Human

### PRODUCT PROPERTIES

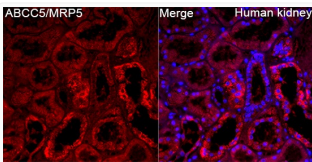
Clonality	Polyclonal
Concentration	Lot specific
Conjugation	Unconjugated
Purification	Affinity purification
Dilution Range	IF/ICC:1:50-1:200 ELISA:Recommended starting concentration is 1 µg/mL. Please optimize the concentration based on your specific assay requirements.
Formulation	PBS with 0.05% Proclin300, 50% Glycerol, pH 7.3.
Isotype	IgG
Molecular Weight	Protein Mw: 161kDa Observed Mw: Refer to figures
Storage Instruction	Store at -20°C for up to 1 year from the date of receipt, and avoid repeat freeze-thaw cycles.

### TARGET INFORMATION

Gene ID	<a href="#">10057</a>
Gene Symbol	<a href="#">ABCC5</a>
UniProt ID	<a href="#">MRP5_HUMAN</a>
Immunogen Region	1101-1200 aa
Immunogen Sequence	RLDLISIALITTTGLMIVLM HGQIPPAYAGLAISYAVQLT GLFQFTVRLASETEARFTSV ERINHYIKTLSLEAPARIKN KAPSPDWPEGEVTFENAEM
Specificity	A synthetic peptide corresponding to a sequence within amino acids 1101-1200 of human ABCC5/MRP5 (NP_005679.2).

### ADDITIONAL INFORMATION

Note STRICTLY FOR FURTHER SCIENTIFIC RESEARCH USE ONLY (RUO). MUST NOT TO BE USED IN DIAGNOSTIC OR THERAPEUTIC APPLICATIONS.



Immunofluorescence analysis of paraffin-embedded Human kidney tissue using ABCC5/MRP5 Rabbit pAb (STJ11107079) at a dilution of 1:200 (40x lens). Secondary antibody: Cy3 Goat Anti-Rabbit IgG (H+L) (STJS001166) at 1:500 dilution. Blue: DAPI for nuclear staining. Perform high pressure antigen retrieval with 0.01 M citrate buffer (pH 6.0) prior to IF staining.