

Anti-AQP3 antibody (193-292 aa) (STJ11107077)

GENERAL INFORMATION

Product Type	Primary antibodies
Applications	IHC-P/ELISA
Host / Source	Rabbit
Reactivity	Human

PRODUCT PROPERTIES

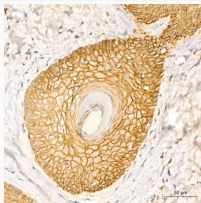
Clonality	Polyclonal
Concentration	Lot specific
Conjugation	Unconjugated
Purification	Affinity purification
Dilution Range	IHC:1:50-1:200 ELISA:Recommended starting concentration is 1 µg/mL. Please optimize the concentration based on your specific assay requirements.
Formulation	PBS with 0.05% Proclin300, 50% Glycerol, pH 7.3.
Isotype	IgG
Molecular Weight	Protein Mw: 32kDa Observed Mw: Refer to figures
Storage Instruction	Store at -20°C for up to 1 year from the date of receipt, and avoid repeat freeze-thaw cycles.

TARGET INFORMATION

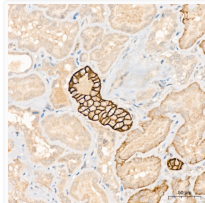
Gene ID	360
Gene Symbol	AQP3
UniProt ID	AQP3_HUMAN
Immunogen Region	193-292 aa
Immunogen Sequence	FTVGLVVLVIGTSMGFNSGY AVNPARDFGPRLFTALAGWG SAVFTTGQHWWVPIVSPLL GSIAGVFVYQLMIGCHLEQP PPSNEEENVKLAHVKHKEQI
Specificity	A synthetic peptide corresponding to a sequence within amino acids 193-292 of human AQP3 (NP_004916.1).

ADDITIONAL INFORMATION

Note STRICTLY FOR FURTHER SCIENTIFIC RESEARCH USE ONLY (RUO). MUST NOT TO BE USED IN DIAGNOSTIC OR THERAPEUTIC APPLICATIONS.



Immunohistochemistry analysis of AQP3 in paraffin-embedded Human skin tissue using AQP3 Rabbit pAb (STJ11107077) at a dilution of 1:200 (40x lens). High pressure antigen retrieval was performed with 0.01 M citrate buffer (pH 6.0) prior to immunohistochemistry staining.



Immunohistochemistry analysis of AQP3 in paraffin-embedded Human kidney tissue using AQP3 Rabbit pAb (STJ11107077) at a dilution of 1:200 (40x lens). High pressure antigen retrieval was performed with 0.01 M citrate buffer (pH 6.0) prior to immunohistochemistry staining.