

## Anti-YBEY antibody (68-167 aa) (STJ11107071)

### GENERAL INFORMATION

Product Type	Primary antibodies
Applications	WB/ELISA
Host / Source	Rabbit
Reactivity	Human/Rat

### PRODUCT PROPERTIES

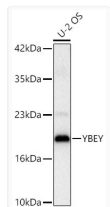
Clonality	Polyclonal
Concentration	Lot specific
Conjugation	Unconjugated
Purification	Affinity purification
Dilution Range	WB:1:500-1:1000 ELISA:Recommended starting concentration is 1 Mu g/mL. Please optimize the concentration based on your specific assay requirements.
Formulation	PBS with 0.05% Proclin300, 50% Glycerol, pH 7.3.
Isotype	IgG
Molecular Weight	Protein Mw: 19kDa Observed Mw: 19kDa
Storage Instruction	Store at-20°C for up to 1 year from the date of receipt, and avoid repeat freeze-thaw cycles.

### TARGET INFORMATION

Gene ID	<a href="#">54059</a>
Gene Symbol	<a href="#">YBEY</a>
UniProt ID	<a href="#">YBEY_HUMAN</a>
Immunogen Region	68-167 aa
Immunogen Sequence	FHEHLKAGEFPQDPDPDYN LGDIFLGVEYIFHQCKENED YNDVLTVTATHGLCHLLGFT HGTEAEWQQMFQKEKAVLDE LGRRTGTRLQLPLTRGLFGGS
Specificity	A synthetic peptide corresponding to a sequence within amino acids 68-167 of human YBEY (NP_478061.1).

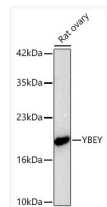
### ADDITIONAL INFORMATION

Note STRICTLY FOR FURTHER SCIENTIFIC RESEARCH USE ONLY (RUO). MUST NOT TO BE USED IN DIAGNOSTIC OR THERAPEUTIC APPLICATIONS.



Western blot analysis of lysates from U-2 OS cells using YBEY Rabbit pAb (STJ11107071) at 1:1000 dilution.

Secondary antibody:HRP Goat Anti-Rabbit IgG (H+L) (STJS000856) at 1:10000 dilution.  
Lysates/proteins: 25 Mu g per lane.  
Blocking buffer: 3% nonfat dry milk in TBST.  
Detection:ECL Basic Kit  
Exposure time:1s.



Western blot analysis of lysates from Rat ovary using YBEY Rabbit pAb (STJ11107071) at 1:1000 dilution.

Secondary antibody:HRP Goat Anti-Rabbit IgG (H+L) (STJS000856) at 1:10000 dilution.  
Lysates/proteins: 25 Mu g per lane.  
Blocking buffer: 3% nonfat dry milk in TBST.  
Detection:ECL Basic Kit  
Exposure time:30s.