

Anti-FAM38A/PIEZO1 antibody (1811-1952 aa) (STJ11107060)

GENERAL INFORMATION

Product Type	Primary antibodies
Applications	WB/ELISA
Host / Source	Rabbit
Reactivity	Human

PRODUCT PROPERTIES

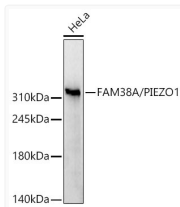
Clonality	Polyclonal
Concentration	Lot specific
Conjugation	Unconjugated
Purification	Affinity purification
Dilution Range	WB:1:500-1:1000 ELISA:Recommended starting concentration is 1 Mu g/mL. Please optimize the concentration based on your specific assay requirements.
Formulation	PBS with 0.09% Sodium Azide, 50% Glycerol, pH7.3.
Isotype	IgG
Molecular Weight	Protein Mw: 287kDa Observed Mw: 315kDa
Storage Instruction	Store at -20°C for up to 1 year from the date of receipt, and avoid repeat freeze-thaw cycles.

TARGET INFORMATION

Gene ID	9780
Gene Symbol	PIEZO1
UniProt ID	PIE1_HUMAN
Immunogen Region	1811-1952 aa
Immunogen Sequence	DSPSKEHDKSGEEEEQGAEEG PGVPAATTEDHIQVEARVGP TDGTPEPQVELRPRDTRRIS LRFRRRKKEGPARKGAAAI EADREEEEGEEKEAPTGRE KRPSRSGGRVRAAGRRLQGF CLSLAQQTYRPLRRFFHDIL HT
Specificity	Recombinant fusion protein containing a sequence corresponding to amino acids 1811-1952 of human FAM38A/PIEZO1 (NP_001136336.2).

ADDITIONAL INFORMATION

Note STRICTLY FOR FURTHER SCIENTIFIC RESEARCH USE ONLY (RUO). MUST NOT TO BE USED IN DIAGNOSTIC OR THERAPEUTIC APPLICATIONS.



Western blot analysis of lysates from HeLa cells using FAM38A/PIEZO1 Rabbit pAb (STJ11107060) at 1:1000 dilution.
Secondary antibody: HRP Goat Anti-Rabbit IgG (H+L) (STJS000856) at 1:10000 dilution.
Lysates/proteins: 25 Mu g per lane.
Blocking buffer: 3% nonfat dry milk in TBST.
Detection: ECL Basic Kit
Exposure time:30s.