

Anti-MBNL1 antibody (280-380 aa) (STJ11107046)

GENERAL INFORMATION

Product Type	Primary antibodies
Applications	WB/ELISA
Host / Source	Rabbit
Reactivity	Mouse/Rat

PRODUCT PROPERTIES

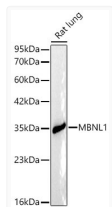
Clonality	Polyclonal
Concentration	Lot specific
Conjugation	Unconjugated
Purification	Affinity purification
Dilution Range	WB:1:500-1:1000 ELISA:Recommended starting concentration is 1 Mu g/mL. Please optimize the concentration based on your specific assay requirements.
Formulation	PBS with 0.05% Proclin300, 50% Glycerol, pH 7.3.
Isotype	IgG
Molecular Weight	Protein Mw: 42kDa Observed Mw: 35kDa/40kDa/42kDa
Storage Instruction	Store at-20°C for up to 1 year from the date of receipt, and avoid repeat freeze-thaw cycles.

TARGET INFORMATION

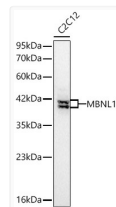
Gene ID	4154
Gene Symbol	MBNL1
UniProt ID	MBNL1_HUMAN
Immunogen Region	280-380 aa
Immunogen Sequence	PLEATFDLGPQAVLPPLPK RPALKTNGATAVFNTGIFQ YQQALANMQLQQHTAFLPPV PMVHGATPATVSAATTSATS VPFAATATANQIPIISA EHL T
Specificity	A synthetic peptide corresponding to a sequence within amino acids 280-380 of human MBNL1 (NP_997176.1).

ADDITIONAL INFORMATION

Note STRICTLY FOR FURTHER SCIENTIFIC RESEARCH USE ONLY (RUO). MUST NOT TO BE USED IN DIAGNOSTIC OR THERAPEUTIC APPLICATIONS.



Western blot analysis of lysates from Rat lung using MBNL1 Rabbit pAb (STJ11107046) at 1:1000 dilution.
 Secondary antibody: HRP-conjugated Goat anti-Rabbit IgG (H+L) (STJS000856) at 1:10000 dilution.
 Lysates/proteins: 25 Mu g per lane.
 Blocking buffer: 3% nonfat dry milk in TBST.
 Detection: ECL Basic Kit
 Exposure time:45s.



Western blot analysis of lysates from C2C12 cells using MBNL1 Rabbit pAb (STJ11107046) at 1:1000 dilution incubated overnight at 4C.
 Secondary antibody: HRP-conjugated Goat anti-Rabbit IgG (H+L) (STJS000856) at 1:10000 dilution.
 Lysates/proteins: 25 Mu g per lane.
 Blocking buffer: 3% nonfat dry milk in TBST.
 Detection: ECL Basic Kit
 Exposure time: 90s.