

Anti-CAT1 antibody (200-300 aa) (STJ11107042)

GENERAL INFORMATION

| | |
|---------------|--------------------|
| Product Type | Primary antibodies |
| Applications | WB/ELISA |
| Host / Source | Rabbit |
| Reactivity | Human/Mouse |

PRODUCT PROPERTIES

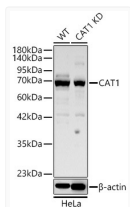
| | |
|---------------------|--|
| Clonality | Polyclonal |
| Concentration | Lot specific |
| Conjugation | Unconjugated |
| Purification | Affinity purification |
| Dilution Range | WB:1:500-1:1000 ELISA:Recommended starting concentration is 1 Mu g/mL. Please optimize the concentration based on your specific assay requirements. |
| Formulation | PBS with 0.05% Proclin300, 50% Glycerol, pH 7.3. |
| Isotype | IgG |
| Molecular Weight | Protein Mw: 68kDa Observed Mw: 70kDa |
| Storage Instruction | Store at -20°C for up to 1 year from the date of receipt, and avoid repeat freeze-thaw cycles. |

TARGET INFORMATION

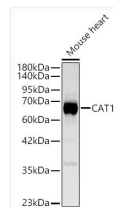
| | |
|--------------------|---|
| Gene ID | 6541 |
| Gene Symbol | SLC7A1 |
| UniProt ID | CTR1_HUMAN |
| Immunogen Region | 200-300 aa |
| Immunogen Sequence | VLGFIMVSGFVKGSVKNWQL TEEDFGNTSGRLCLNNDTKE GKPGVGGFMPFGFSGVLSGA ATCFYAFVGFDCIATTGEEV KNPQKAIPVGIVASLLICFI A |
| Specificity | A synthetic peptide corresponding to a sequence within amino acids 200-300 of human SLC7A1 (NP_003036.1). |

ADDITIONAL INFORMATION

Note **STRICTLY FOR FURTHER SCIENTIFIC RESEARCH USE ONLY (RUO). MUST NOT TO BE USED IN DIAGNOSTIC OR THERAPEUTIC APPLICATIONS.**



Western blot analysis of lysates from wild type (WT) and CAT1 knockdown (KD) HeLa cells using [KD Validated] CAT1 Rabbit pAb (STJ11107042) at 1:1000 dilution. Secondary antibody: HRP-conjugated Goat anti-Rabbit IgG (H+L) (STJS000856) at 1:10000 dilution. Lysates/proteins: 17 Mu g per lane. Blocking buffer: 3% nonfat dry milk in TBST. Detection: ECL Basic Kit Exposure time: 20s.



Western blot analysis of lysates from Mouse heart using [KD Validated] CAT1 Rabbit pAb (STJ11107042) at 1:1000 dilution. Secondary antibody: HRP-conjugated Goat anti-Rabbit IgG (H+L) (STJS000856) at 1:10000 dilution. Lysates/proteins: 25 Mu g per lane. Blocking buffer: 3% nonfat dry milk in TBST. Detection: ECL Basic Kit Exposure time: 20s.