

Anti-LXR beta/NER antibody (1-100 aa) (STJ11107035)

GENERAL INFORMATION

Product Type	Primary antibodies
Applications	WB/ELISA
Host / Source	Rabbit
Reactivity	Human

PRODUCT PROPERTIES

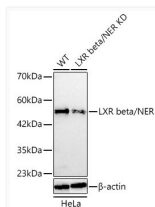
Clonality	Polyclonal
Concentration	Lot specific
Conjugation	Unconjugated
Purification	Affinity purification
Dilution Range	WB:1:500-1:1000 ELISA:Recommended starting concentration is 1 Mu g/mL. Please optimize the concentration based on your specific assay requirements.
Formulation	PBS with 0.05% Proclin300, 50% Glycerol, pH 7.3.
Isotype	IgG
Molecular Weight	Protein Mw: 51kDa Observed Mw: 51kDa
Storage Instruction	Store at -20°C for up to 1 year from the date of receipt, and avoid repeat freeze-thaw cycles.

TARGET INFORMATION

Gene ID	7376
Gene Symbol	NR1H2
UniProt ID	NR1H2_HUMAN
Immunogen Region	1-100 aa
Immunogen Sequence	MSSPTTSSLDTPLPGNGPPQ PGAPSSSPTVKEEGPEPWPG GPDPDVPGTDEASSACSTDW VIPDPEEEPERKRKKGPAK MLGHELRCRVCGDKASGFHYN
Specificity	A synthetic peptide corresponding to a sequence within amino acids 1-100 of human LXR beta/NER (NP_009052.4).

ADDITIONAL INFORMATION

Note STRICTLY FOR FURTHER SCIENTIFIC RESEARCH USE ONLY (RUO). MUST NOT TO BE USED IN DIAGNOSTIC OR THERAPEUTIC APPLICATIONS.



Western blot analysis of lysates from wild type (WT) and LXR beta/NER knockdown (KD) HeLa cells using [KD Validated] LXR beta/NER Rabbit pAb (STJ11107035) at 1:1000 dilution.

Secondary antibody: HRP-conjugated Goat anti-Rabbit IgG (H+L) (STJS000856) at 1:10000 dilution. Lysates/proteins: 25 Mu g per lane.

Blocking buffer: 3% nonfat dry milk in TBST.

Detection: ECL Basic Kit

Exposure time: 60s.