

Anti-MRPL27 antibody (49-148 aa) (STJ11107034)

GENERAL INFORMATION

Product Type	Primary antibodies
Applications	WB/IHC-P/ELISA
Host / Source	Rabbit
Reactivity	Human/Mouse

PRODUCT PROPERTIES

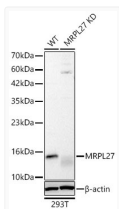
Clonality	Polyclonal
Concentration	Lot specific
Conjugation	Unconjugated
Purification	Affinity purification
Dilution Range	WB:1:500-1:1000 IHC-P:1:50-1:200 ELISA:Recommended starting concentration is 1 µg/mL. Please optimize the concentration based on your specific assay requirements.
Formulation	PBS with 0.05% Proclin300, 50% Glycerol, pH 7.3.
Isotype	IgG
Molecular Weight	Protein Mw: 16kDa Observed Mw: 16kDa
Storage Instruction	Store at -20°C for up to 1 year from the date of receipt, and avoid repeat freeze-thaw cycles.

TARGET INFORMATION

Gene ID	51264
Gene Symbol	MRPL27
UniProt ID	RM27_HUMAN
Immunogen Region	49-148 aa
Immunogen Sequence	RRQGIKKMEGHYVHAGNIIA TQRHFRWHPGAHVGVGKNC LYALEEGIVRYTKEVYVPHR RNTEAVDLITRLPKGAVLYK TFVHVVPKPEGTFKLVAML
Specificity	A synthetic peptide corresponding to a sequence within amino acids 49-148 of human MRPL27 (NP_057588.1).

ADDITIONAL INFORMATION

Note STRICTLY FOR FURTHER SCIENTIFIC RESEARCH USE ONLY (RUO). MUST NOT TO BE USED IN DIAGNOSTIC OR THERAPEUTIC APPLICATIONS.



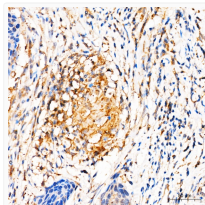
Western blot analysis of lysates from wild type (WT) and MRPL27 knockdown (KD) 293T cells using [KD Validated] MRPL27 Rabbit pAb (STJ11107034) at 1:1000 dilution.

Secondary antibody: HRP-conjugated Goat anti-Rabbit IgG (H+L) (STJS000856) at 1:10000 dilution. Lysates/proteins: 25 µg per lane.

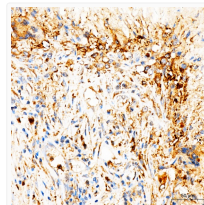
Blocking buffer: 3% nonfat dry milk in TBST.

Detection: ECL Basic Kit

Exposure time: 60s.



Immunohistochemistry analysis of paraffin-embedded Human cervical squamous cell carcinoma tissue using [KD Validated] MRPL27 Rabbit pAb (STJ11107034) at a dilution of 1:100 (40x lens). High pressure antigen retrieval was performed with 0.01 M citrate buffer (pH 6.0) prior to immunohistochemistry staining.



Immunohistochemistry analysis of paraffin-embedded Human liver cancer tissue using [KD Validated] MRPL27 Rabbit pAb (STJ11107034) at a dilution of 1:100 (40x lens). High pressure antigen retrieval was performed with 0.01 M citrate buffer (pH 6.0) prior to immunohistochemistry staining.