

## Anti-RPS6 antibody (1-249 aa) [SMM5161] (STJ11107006)

### GENERAL INFORMATION

Product Type	Primary antibodies
Applications	WB/ELISA
Host / Source	Mouse
Reactivity	Human/Mouse/Rat

### PRODUCT PROPERTIES

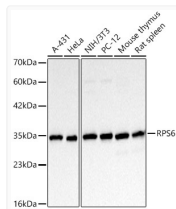
Clonality	Monoclonal
Concentration	Lot specific
Conjugation	Unconjugated
Purification	Affinity purification
Dilution Range	WB:1:500-1:1000 ELISA:Recommended starting concentration is 1 µg/mL. Please optimize the concentration based on your specific assay requirements.
Formulation	PBS with 0.05% Proclin300, 0.05% BSA, 50% Glycerol, pH 7.3.
Isotype	IgG
Molecular Weight	Protein Mw: 29kDa Observed Mw: 32kDa
Storage Instruction	Store at -20°C for up to 1 year from the date of receipt, and avoid repeat freeze-thaw cycles.

### TARGET INFORMATION

Gene ID	<a href="#">6194</a>
Gene Symbol	<a href="#">RPS6</a>
UniProt ID	<a href="#">RS6_HUMAN</a>
Immunogen Region	1-249 aa
Immunogen Sequence	MKLNISFPATGCQKLVIEDD ERKLRFTFYEKRMATEVAADA LGEEWKGYVVVRISGGNDKQG FPMKQGVLTGHRVRLLSKG HSCYRPRRTGERKRKSVRGC IVDANLSVLNLVIVKKGEKD IPGLDITVPRRLGPKRASR IRKLFNLSKEDDVRQYVVRK PLNKEGKKPRTKAPKIQRLV TPRVLQHKRRRIALKKQRTK KNKEEAAEYAKLLAKRMKEA KEKQEQIAKRRRLSSLRA
Specificity	A synthetic peptide corresponding to a sequence within amino acids 1-249 of human S6 Ribosomal Protein (NP_001001.2).

### ADDITIONAL INFORMATION

Note STRICTLY FOR FURTHER SCIENTIFIC RESEARCH USE ONLY (RUO). MUST NOT TO BE USED IN DIAGNOSTIC OR THERAPEUTIC APPLICATIONS.



Western blot analysis of various lysates, using RPS6 Mouse mAb (STJ11107006) at 1:1000 dilution.

Secondary antibody: HRP-conjugated Goat anti-Mouse IgG (H+L) (STJS000854) at 1:10000 dilution.

Lysates/proteins: 25 µg per lane.

Blocking buffer: 3% nonfat dry milk in TBST.

Detection: ECL Basic Kit

Exposure time: 20s.