

Anti-CYP2D6 antibody (20-230) (STJ111069)

GENERAL INFORMATION

| | |
|---------------|--------------------|
| Product Type | Primary antibodies |
| Applications | WB/ELISA |
| Host / Source | Rabbit |
| Reactivity | Human/Mouse/Rat |

PRODUCT PROPERTIES

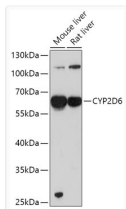
| | |
|---------------------|------------------------------------------------------------------------------------------------------------------------------------------------------|
| Clonality | Polyclonal |
| Concentration | Lot specific |
| Conjugation | Unconjugated |
| Purification | Affinity purification |
| Dilution Range | WB:1:500-1:1000 ELISA:Recommended starting concentration is 1 µg/mL. Please optimize the concentration based on your specific assay requirements. |
| Formulation | PBS with 0.02% Sodium Azide, 50% Glycerol, pH 7.3. |
| Isotype | IgG |
| Molecular Weight | Protein Mw: 56kDa Observed Mw: 60kDa |
| Storage Instruction | Store at -20°C for up to 1 year from the date of receipt, and avoid repeat freeze-thaw cycles. |

TARGET INFORMATION

| | |
|--------------------|----------------------------------------------------------------------------------------------------------------------------------------------------------------------------------------------------------------------------------------------------------------------------------------------------------------------------------------------------------------------------------------------------------------------------------------------|
| Gene ID | 1565 |
| Gene Symbol | CYP2D6 |
| UniProt ID | CP2D6_HUMAN |
| Immunogen Region | 20-230 |
| Immunogen Sequence | V D L M H R R Q R W A A R Y P P G L P L P G L G N L L H V D F Q N T P Y C F D Q L R R R F G D V F S L Q L A W T P V V V L N G L A A V R E A L V T H G E D T A D R P P V P I T Q I L G F G P R S Q G V F L A R Y G P A W R E Q R R F S V S T L R N L G L G K K S L E Q W V T E E A A C L C A A F A N H S G R P F R P N G L L D K A V S N V I A S L T C G R R F E Y D D P R F L R L L D L A Q E G L K E E S G F L R E V L N A V P V L |
| Specificity | Recombinant fusion protein containing a sequence corresponding to amino acids 20-230 of human CYP2D6 (NP_000097.3). |

ADDITIONAL INFORMATION

Note **STRICTLY FOR FURTHER SCIENTIFIC RESEARCH USE ONLY (RUO). MUST NOT TO BE USED IN DIAGNOSTIC OR THERAPEUTIC APPLICATIONS.**



Western blot analysis of various lysates using CYP2D6 Rabbit polyclonal antibody (STJ111069) at 1:1000 dilution. Secondary antibody: HRP Goat Anti-Rabbit IgG (H+L) (STJS000856) at 1:10000 dilution. Lysates/proteins: 25 µg per lane. Blocking buffer: 3% nonfat dry milk in TBST. Detection: ECL Basic Kit. Exposure time: 90s.