

Anti-Human IgM antibody (218-453 aa) [SRM5149] (STJ11106989)

GENERAL INFORMATION

Product Type	Primary antibodies
Applications	WB/IF/ICC/FC/ELISA
Host / Source	Rabbit
Reactivity	Human

PRODUCT PROPERTIES

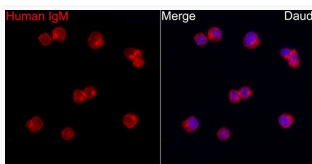
Clonality	Monoclonal
Concentration	Lot specific
Conjugation	Unconjugated
Purification	Affinity purification
Dilution Range	WB:1:1000-1:4000 IF/CC:1:200-1:800 FC:1:500-1:1000 ELISA:Recommended starting concentration is 1 Mu g/mL. Please optimize the concentration based on your specific assay requirements.
Formulation	PBS with 0.05% Proclin300, 0.05% BSA, 50% Glycerol, pH 7.3.
Isotype	IgG
Molecular Weight	Protein Mw: 49kDa Observed Mw: 75kDa
Storage Instruction	Store at -20°C for up to 1 year from the date of receipt, and avoid repeat freeze-thaw cycles.

TARGET INFORMATION

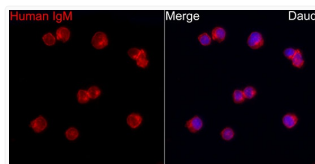
Gene Symbol	IGHM Uniprot ID= IGHM_HUMAN "
Immunogen Region	218-453 aa
Immunogen Sequence	QDTAIRVFAIPPSFASIFLT KSTKLTCLVLDLTTYDSVTI SWTRQNGEAVKTHTNISESH PNATFSAVGEASICEDDWS GERFTCTVHTDLPSPLKQT ISRPKGVALHRPDVYLLPPA REQLNLRASATITCLVTGFS PADVFVQWMQRGQPLSPEKY VTSAPMPEPQAPGRYFAHSI LTVSEEEWNTGETYTCVVAH EALPNRVTERTVDKSTGKPT LYNVSLVMSDTAGTCY
Specificity	Recombinant fusion protein containing a sequence corresponding to amino acids 218-453 of Human IgM (P01871).

ADDITIONAL INFORMATION

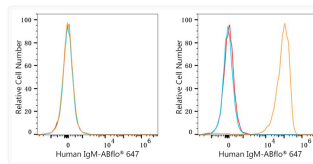
Note STRICTLY FOR FURTHER SCIENTIFIC RESEARCH USE ONLY (RUO). MUST NOT TO BE USED IN DIAGNOSTIC OR THERAPEUTIC APPLICATIONS.



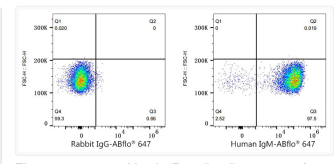
Confocal imaging of Daudi cells using Rabbit anti-Human IgM mAb (STJ11106989, dilution 1:200) , (Red). DAPI was used for nuclear staining (blue). Objective:40x.



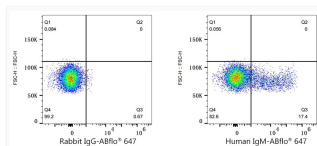
Confocal imaging of Daudi cells using Human IgM (FC) Rabbit mAb (STJ11106989, dilution 1:200) followed by a further incubation with Cy3 Goat Anti-Rabbit IgG (H+L) (STJS001166, dilution 1:500) (Red). DAPI was used for nuclear staining (Blue). Objective: 100x.



Flow cytometry: 1X10⁶ Jurkat cells (negative control, left) and Daudi cells (right) were surface-stained with Human IgM (FC) Rabbit mAb (STJ11106989, 2 Mu g/mL, orange line) or ABflo® 647 Rabbit IgG isotype control (STJ229790, 5 Mu l/Test, blue line) , followed by Alexa Fluor® 647 conjugated goat anti-rabbit pAb staining. Non-fluorescently stained cells were used as blank control (red line).



Flow cytometry: 1X10⁶ Daudi cells were surface-stained with Rabbit IgG isotype control (STJ11105763, 2 Mu g/mL, left) or Human IgM (FC) Rabbit mAb (STJ11106989, 2 Mu g/mL, right) , followed by Alexa Fluor® 647 conjugated goat anti-rabbit pAb staining.



Flow cytometry: 1X10⁶ Human PBMC were surface-stained with Rabbit IgG isotype control (STJ11105763, 2 Mu g/mL, left) or Human IgM (FC) Rabbit mAb (STJ11106989, 2 Mu g/mL, right) , followed by Alexa Fluor® 647 conjugated goat anti-rabbit pAb staining.