

## Anti-FKBP10 antibody (303-582 aa) [SRM5147] (STJ11106986)

### GENERAL INFORMATION

Product Type	Primary antibodies
Applications	WB/IF/ICC/ELISA
Host / Source	Rabbit
Reactivity	Human

### PRODUCT PROPERTIES

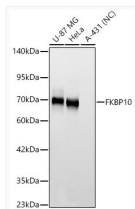
Clonality	Monoclonal
Concentration	Lot specific
Conjugation	Unconjugated
Purification	Affinity purification
Dilution Range	WB:1:1000-1:5000 IF/CC:1:50-1:200 ELISA:Recommended starting concentration is 1 Mu g/mL. Please optimize the concentration based on your specific assay requirements.
Formulation	PBS with 0.05% Proclin300, 0.05% BSA, 50% Glycerol, pH 7.3.
Isotype	IgG
Molecular Weight	Protein Mw: 39kDa/64kDa Observed Mw: 70kDa
Storage Instruction	Store at -20°C for up to 1 year from the date of receipt, and avoid repeat freeze-thaw cycles.

### TARGET INFORMATION

Gene ID	<a href="#">60681</a>
Gene Symbol	<a href="#">FKBP10</a>
UniProt ID	<a href="#">FKB10_HUMAN</a>
Immunogen Region	303-582 aa
Immunogen Sequence	FDSSYSRNHTYNTYIGQGYI IPGMDQGLQGACMGERRRIT IPPHLAYGENGTGDKIPGSA VLIFNVHVIDFHNPADVVEI RTLSRPSETCNETTKLGDFV RYHYNCSLLDGTQLFTSHDY GAPQEATLGANKVIEGLDTG LQGMCVGERRQLIVPPHLAH GESGARGVPGSAVLLFEVEL VSREDGLPTGYLFFVWHKDPP ANLFEDMDLNKDGVEVPEEF STFIKAQVSEGKRLMPGQ
Specificity	Recombinant fusion protein containing a sequence corresponding to amino acids 303-582 of human FKBP10 (NP_068758.3).

### ADDITIONAL INFORMATION

Note STRICTLY FOR FURTHER SCIENTIFIC RESEARCH USE ONLY (RUO). MUST NOT TO BE USED IN DIAGNOSTIC OR THERAPEUTIC APPLICATIONS.



Western blot analysis of various lysates using FKBP10 Rabbit mAb (STJ11106986) at 1:3000 dilution.

Secondary antibody: HRP-conjugated Goat anti-Rabbit IgG (H+L) (STJS000856) at 1:10000 dilution.

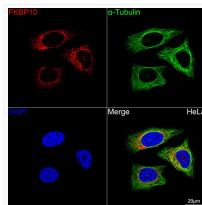
Lysates/proteins: 25 Mu g per lane.

Blocking buffer: 3% nonfat dry milk in TBST.

Detection: ECL Basic Kit

Negative control (NC) : A-431

Exposure time: 15s.



Confocal imaging of HeLa cells using FKBP10 Rabbit mAb (STJ11106986, dilution 1:200) followed by a further incubation with Cy3 Goat Anti-Rabbit IgG (H+L) (STJS001166, dilution 1:500) (Red). The cells were counterstained with ̢-Tubulin Mouse mAb (STJ11107556, dilution 1:400) followed by incubation with ABflo® 488-conjugated Goat Anti-Mouse IgG (H+L) antibody (STJS001209, dilution 1:500) (Green). DAPI was used for nuclear staining (Blue). Objective: 100x.