

Anti-PDXK antibody (213-312 aa) (STJ11106979)

GENERAL INFORMATION

Product Type	Primary antibodies
Applications	WB/IF/ICC/ELISA
Host / Source	Rabbit
Reactivity	Human/Mouse/Rat

PRODUCT PROPERTIES

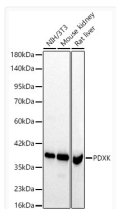
Clonality	Polyclonal
Concentration	Lot specific
Conjugation	Unconjugated
Purification	Affinity purification
Dilution Range	WB:1:500-1:1000 IF/CC:1:50-1:200 ELISA:Recommended starting concentration is 1 Mu g/mL. Please optimize the concentration based on your specific assay requirements.
Formulation	PBS with 0.02% Sodium Azide, 50% Glycerol, pH 7.3.
Isotype	IgG
Molecular Weight	Protein Mw: 35kDa Observed Mw: 35kDa
Storage Instruction	Store at -20°C for up to 1 year from the date of receipt, and avoid repeat freeze-thaw cycles.

TARGET INFORMATION

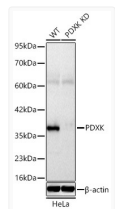
Gene ID	8566
Gene Symbol	PDXK
UniProt ID	PDXK_HUMAN
Immunogen Region	213-312 aa
Immunogen Sequence	SVVMERIRMDIRKVDVAVFG TGD LFAAMLLAWTHKHPNNL KVACEKTVSTLHHVLQRTIQ CAKAQAGEGVRPSPMQLELR MVQSKRDIEDPEIVVQATVL
Specificity	A synthetic peptide corresponding to a sequence within amino acids 213-312 of human PDXK (NP_003672.1).

ADDITIONAL INFORMATION

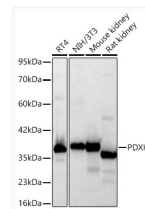
Note STRICTLY FOR FURTHER SCIENTIFIC RESEARCH USE ONLY (RUO). MUST NOT TO BE USED IN DIAGNOSTIC OR THERAPEUTIC APPLICATIONS.



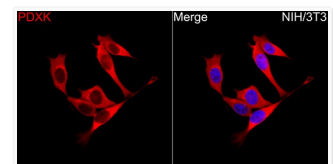
Western blot analysis of various lysates using [KD Validated]PDXK Rabbit pAb (STJ11106979) at 1:10000 dilution.
Secondary antibody: HRP-conjugated Goat anti-Rabbit IgG (H+L) (STJS000856) at 1:10000 dilution.
Lysates/ proteins: 25 Mu g per lane.
Blocking buffer: 3 % nonfat dry milk in TBST.
Detection: ECL Basic Kit
Exposure time: 30s.



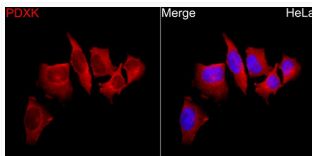
Western blot analysis of lysates from wild type (WT) and PDXK knockdown (KD) HeLa cells using [KD Validated]PDXK Rabbit pAb (STJ11106979) at 1:1600 dilution incubated overnight at 4C.
Secondary antibody: HRP-conjugated Goat anti-Rabbit IgG (H+L) (STJS000856) at 1:10000 dilution.
Lysates/proteins: 25 Mu g per lane.
Blocking buffer: 3% nonfat dry milk in TBST.
Detection: ECL Basic Kit
Exposure time: 10s.



Western blot analysis of various lysates using [KD Validated]PDXK Rabbit pAb (STJ11106979) at 1:1600 dilution incubated overnight at 4C.
Secondary antibody: HRP-conjugated Goat anti-Rabbit IgG (H+L) (STJS000856) at 1:10000 dilution.
Lysates/proteins: 25 Mu g per lane.
Blocking buffer: 3% nonfat dry milk in TBST.
Detection: ECL Basic Kit
Exposure time: 10s.



Immunofluorescence analysis of NIH/3T3 cells using [KD Validated]PDXK Rabbit pAb (STJ11106979) at a dilution of 1:100 (40x lens).
Secondary antibody: Cy3-conjugated Goat anti-Rabbit IgG (H+L) (STJS001166) at 1:500 dilution.
Blue: DAPI for nuclear staining.



Immunofluorescence analysis of HeLa cells using [KD Validated]PDXK Rabbit pAb (STJ11106979) at a dilution of 1:100 (40x lens).
Secondary antibody: Cy3-conjugated Goat anti-Rabbit IgG (H+L) (STJS001166) at 1:500 dilution.
Blue: DAPI for nuclear staining.