

## Anti-Gamma-Tubulin antibody [SRM5139] (STJ11106968)

### GENERAL INFORMATION

Product Type	Primary antibodies
Applications	WB/ELISA
Host / Source	Rabbit
Reactivity	Human/Mouse/Rat

### PRODUCT PROPERTIES

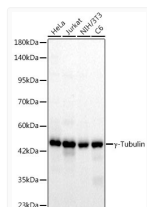
Clonality	Monoclonal
Concentration	Lot specific
Conjugation	Unconjugated
Purification	Affinity purification
Dilution Range	WB:1:500-1:1000 ELISA:Recommended starting concentration is 1 µg/mL. Please optimize the concentration based on your specific assay requirements.
Formulation	PBS with 0.09% Sodium Azide, 0.05% BSA, 50% Glycerol, pH 7.3.
Isotype	IgG
Molecular Weight	Protein Mw: 51kDa Observed Mw: 50kDa
Storage Instruction	Store at -20°C for up to 1 year from the date of receipt, and avoid repeat freeze-thaw cycles.

### TARGET INFORMATION

Gene ID	<a href="#">7283</a>
Gene Symbol	<a href="#">TUBG1</a>
UniProt ID	<a href="#">TUBG1_HUMAN</a>
Immunogen Sequence	LVSTIMSASTTTLRYPGYMN NDLIGLIASLIPTPRLHFLM TGYTPLTTDQSVASVRKTTV LDVMRRLLOPKNVMVSTGRD RQTNHCYIAILNIIQGEVDP TQVHKSLQRIRERKLANFIP WGPASIQVALSRKSPYLPSA HRVSGLMANHTSISLFFER TCRQYDKLRKREAFLEQFRK EDMFKDNFDEMDTSREIVQQ LIDEYHAATRPDYISWGTQE Q
Specificity	Recombinant protein of human Gamma-Tubulin.

### ADDITIONAL INFORMATION

Note STRICTLY FOR FURTHER SCIENTIFIC RESEARCH USE ONLY (RUO). MUST NOT TO BE USED IN DIAGNOSTIC OR THERAPEUTIC APPLICATIONS.



Western blot analysis of various lysates, using Gamma-Tubulin Rabbit mAb (STJ11106968) at 1:1000 dilution.

Secondary antibody: HRP-conjugated Goat anti-Rabbit IgG (H+L) (STJS000856) at 1:10000 dilution.

Lysates/proteins: 25 µg per lane.

Blocking buffer: 3% nonfat dry milk in TBST.

Detection: ECL Basic Kit

Exposure time: 20s.