

Anti-Caspase-9 antibody (250-350 aa) (STJ11106883)

GENERAL INFORMATION

Product Type	Primary antibodies
Applications	WB/IHC-P/IF/ICC/ELISA
Host / Source	Rabbit
Reactivity	Human/Mouse/Rat

PRODUCT PROPERTIES

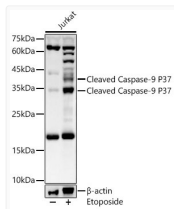
Clonality	Polyclonal
Concentration	Lot specific
Conjugation	Unconjugated
Purification	Affinity purification
Dilution Range	WB:1:500-1:1000 IHC-P:1:50-1:200 IF:1:50-1:200 ELISA:Recommended starting concentration is 1 Mu g/mL. Please optimize the concentration based on your specific assay requirements.
Formulation	PBS with 0.05% Proclin300, 50% Glycerol, pH 7.3.
Isotype	IgG
Molecular Weight	Protein Mw: 46kDa Observed Mw: 35kDa/37kDa
Storage Instruction	Store at -20°C for up to 1 year from the date of receipt, and avoid repeat freeze-thaw cycles.

TARGET INFORMATION

Gene ID	842
Gene Symbol	CASP9
UniProt ID	CASP9_HUMAN
Immunogen Region	250-350 aa
Immunogen Sequence	VYGTDGCPVSVEKIVNIFNG TSCPSLGGKPKLFFIQACGG EQKDHGFEVASTSPEDESPG SNPEPDATPFQEGLRFTDQL DAISLPTPSDIFVSYSTFP G
Specificity	A synthetic peptide corresponding to a sequence within amino acids 250-350 of human Caspase-9 (NP_001220.2).

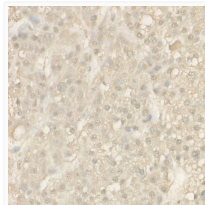
ADDITIONAL INFORMATION

Note **STRICTLY FOR FURTHER SCIENTIFIC RESEARCH USE ONLY (RUO). MUST NOT TO BE USED IN DIAGNOSTIC OR THERAPEUTIC APPLICATIONS.**

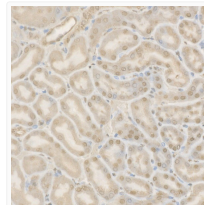


Western blot analysis of lysates from Jurkat cells, using Cleaved Caspase-9 P37 Rabbit pAb (STJ11106883) at 1:900 dilution. Jurkat cells were treated by Etoposide (25 uM) at 37 °C for 5 hours. Secondary antibody: HRP-conjugated Goat anti-Rabbit IgG (H+L) (STJS000856) at 1:10000 dilution.

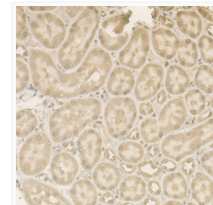
Lysates/proteins: 25 Mu g per lane.
Blocking buffer: 3% nonfat dry milk in TBST.
Detection: ECL Basic Kit
Exposure time: 30s.



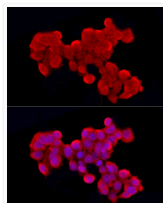
Immunohistochemistry analysis of paraffin-embedded Human liver cancer using Cleaved Caspase-9 P37 Rabbit pAb (STJ11106883) at dilution of 1:50 (40x lens). High pressure antigen retrieval performed with 0.01M Citrate Bufferr (pH 6.0) prior to immunohistochemistry staining.



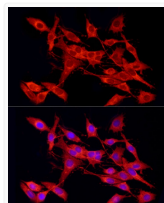
Immunohistochemistry analysis of paraffin-embedded Mouse kidney using Cleaved Caspase-9 P37 Rabbit pAb (STJ11106883) at dilution of 1:50 (40x lens). High pressure antigen retrieval performed with 0.01M Citrate Bufferr (pH 6.0) prior to immunohistochemistry staining.



Immunohistochemistry analysis of paraffin-embedded Rat kidney using Cleaved Caspase-9 P37 Rabbit pAb (STJ11106883) at dilution of 1:50 (40x lens). High pressure antigen retrieval performed with 0.01M Citrate Bufferr (pH 6.0) prior to immunohistochemistry staining.



Immunofluorescence analysis of HepG2 cells using Cleaved Caspase-9 P37 Rabbit pAb (STJ11106883) at dilution of 1:50 (40x lens). Secondary antibody: Cy3-conjugated Goat anti-Rabbit IgG (H+L) (STJS001166) at 1:500 dilution. Blue: DAPI for nuclear staining.



Immunofluorescence analysis of PC-12 cells using Cleaved Caspase-9 P37 Rabbit pAb (STJ11106883) at dilution of 1:50 (40x lens). Secondary antibody: Cy3-conjugated Goat anti-Rabbit IgG (H+L) (STJS001166) at 1:500 dilution. Blue: DAPI for nuclear staining.