

## Anti-Cleaved Gasdermin B antibody (144-244 aa) (STJ11106869)

### GENERAL INFORMATION

Product Type	Primary antibodies
Applications	WB/ELISA
Host / Source	Rabbit
Reactivity	Human

### PRODUCT PROPERTIES

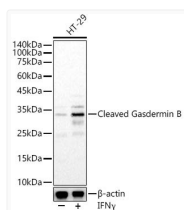
Clonality	Polyclonal
Concentration	Lot specific
Conjugation	Unconjugated
Purification	Affinity purification
Dilution Range	WB:1:100-1:500 ELISA:Recommended starting concentration is 1 Mu g/mL. Please optimize the concentration based on your specific assay requirements.
Formulation	PBS with 0.05% Proclin300, 50% Glycerol, pH 7.3.
Isotype	IgG
Molecular Weight	Protein Mw: 18kDa/45kDa/46kDa/47kDa Observed Mw: 30kDa
Storage Instruction	Store at -20°C for up to 1 year from the date of receipt, and avoid repeat freeze-thaw cycles.

### TARGET INFORMATION

Gene ID	<a href="#">55876</a>
Gene Symbol	<a href="#">GSDMB</a>
UniProt ID	<a href="#">GSDMB_HUMAN</a>
Immunogen Region	144-244 aa
Immunogen Sequence	FSFRSINTRENLYLVETLE TVKEETLKSDRQYKFWSQIS QGHLSYKHKGQREVTIPPNR VLSYRVKQLVFPNKETMNIH FRGKTKSFPEGKSLGSEDSR N
Specificity	Recombinant fusion protein containing a sequence corresponding to amino acids 144-244 of human Cleaved Gasdermin B. (NP_001159431.1).

### ADDITIONAL INFORMATION

Note STRICTLY FOR FURTHER SCIENTIFIC RESEARCH USE ONLY (RUO). MUST NOT TO BE USED IN DIAGNOSTIC OR THERAPEUTIC APPLICATIONS.



Western blot analysis of lysates from HT-29 cells, using Cleaved Gasdermin B Rabbit pAb (STJ11106869) at 1:400 dilution. HT-29 cells were treated by IFN Gamma (50ng/ml) for 8 hours. Secondary antibody: HRP-conjugated Goat anti-Rabbit IgG (H+L) (STJS000856) at 1:10000 dilution.  
Lysates/proteins: 25 Mu g per lane.  
Blocking buffer: 3% nonfat dry milk in TBST.  
Detection: ECL Basic Kit  
Exposure time: 5s.