

## Anti-Beta III-Tubulin antibody (40-260 aa) [SMM5069] (STJ11106837)

### GENERAL INFORMATION

Product Type	Primary antibodies
Applications	WB/IF/ICC/ELISA
Host / Source	Mouse
Reactivity	Human/Mouse/Rat

### PRODUCT PROPERTIES

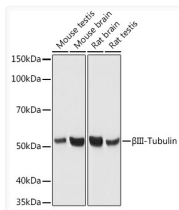
Clonality	Monoclonal
Concentration	Lot specific
Conjugation	Unconjugated
Purification	Affinity purification
Dilution Range	WB:1:1000-1:5000 IF/CC:1:50-1:200 ELISA:Recommended starting concentration is 1 Mu g/mL. Please optimize the concentration based on your specific assay requirements.
Formulation	PBS with 0.05% Proclin300, 50% Glycerol, pH 7.3.
Isotype	IgG2ak
Molecular Weight	Protein Mw: 50kDa Observed Mw: Refer to figures

### TARGET INFORMATION

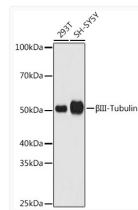
Gene ID	<a href="#">10381</a>
Gene Symbol	<a href="#">TUBB3</a>
UniProt ID	<a href="#">TBB3_HUMAN</a>
Immunogen Region	40-260 aa
Immunogen Sequence	SDLQLERISVYYNEASSHKY VPRAILVDLEPGTMDSVRSG AFGHLFRPDNFIFGQSGAGN NWAKGHYTEGAELVDSVLDV VRKECENCDCLOGFQLTHSL GGGTGS GMGTLLISKVREEY PDRIMNTFSVVPSPKVS DTV VEPYNATLSIHQLVENTDET YCIDNEALYDICFRTLKLAT PTYGDLNHLVSA TMSGVTTS LRFPGQLNADLRKLVANMVP F
Specificity	Recombinant fusion protein containing a sequence corresponding to amino acids 40-260 of human Beta III-Tubulin (Q13509).

### ADDITIONAL INFORMATION

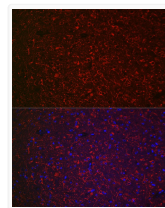
Note **STRICTLY FOR FURTHER SCIENTIFIC RESEARCH USE ONLY (RUO). MUST NOT TO BE USED IN DIAGNOSTIC OR THERAPEUTIC APPLICATIONS.**



Western blot analysis of various lysates using Beta III-Tubulin Mouse mAb (STJ11106837) at 1:3000 dilution.  
 Secondary antibody: HRP-conjugated Goat anti-Mouse IgG (H+L) (STJS000854) at 1:10000 dilution.  
 Lysates/proteins: 25 Mu g per lane.  
 Blocking buffer: 3% nonfat dry milk in TBST.  
 Detection: ECL Basic Kit  
 Exposure time: 1s.



Western blot analysis of various lysates using Beta III-Tubulin Mouse mAb (STJ11106837) at 1:3000 dilution.  
 Secondary antibody: HRP-conjugated Goat anti-Mouse IgG (H+L) (STJS000854) at 1:10000 dilution.  
 Lysates/proteins: 25 Mu g per lane.  
 Blocking buffer: 3% nonfat dry milk in TBST.  
 Detection: ECL Basic Kit  
 Exposure time: 180s.



Immunofluorescence analysis of paraffin-embedded mouse brain using Beta III-Tubulin/Beta 3-Tubulin Mouse mAb (STJ11106837) at dilution of 1:100 (40x lens).  
 Blue: DAPI for nuclear staining.